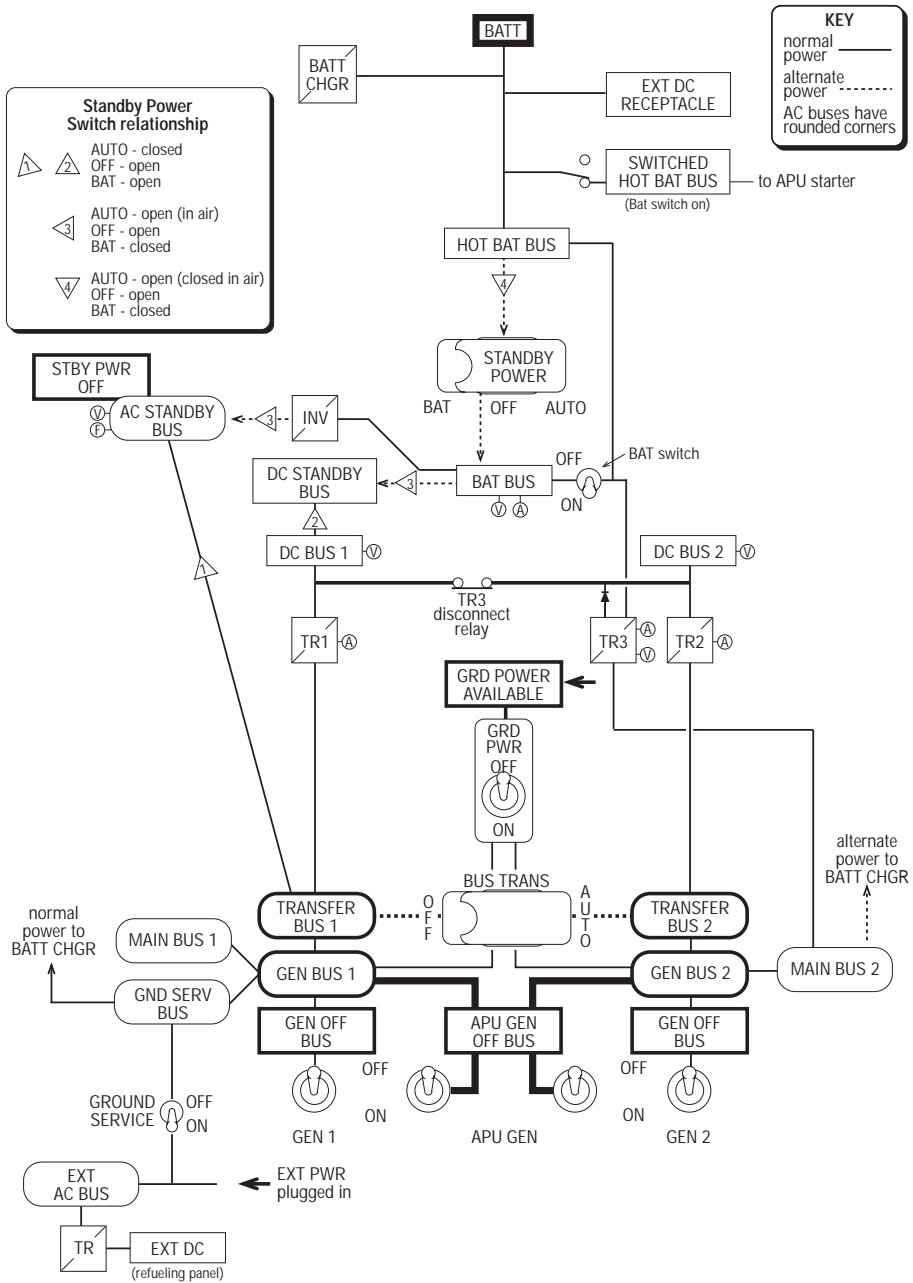
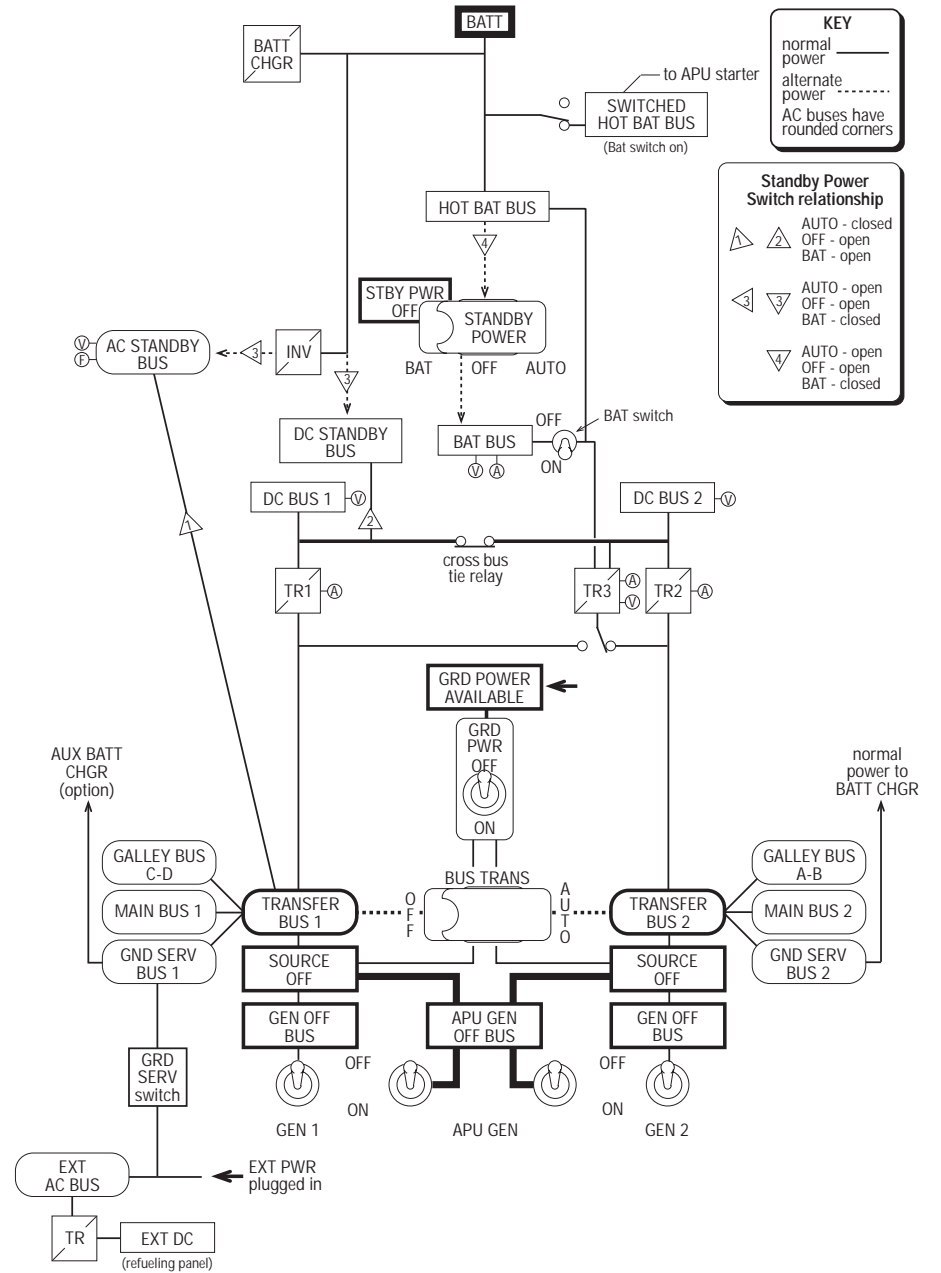


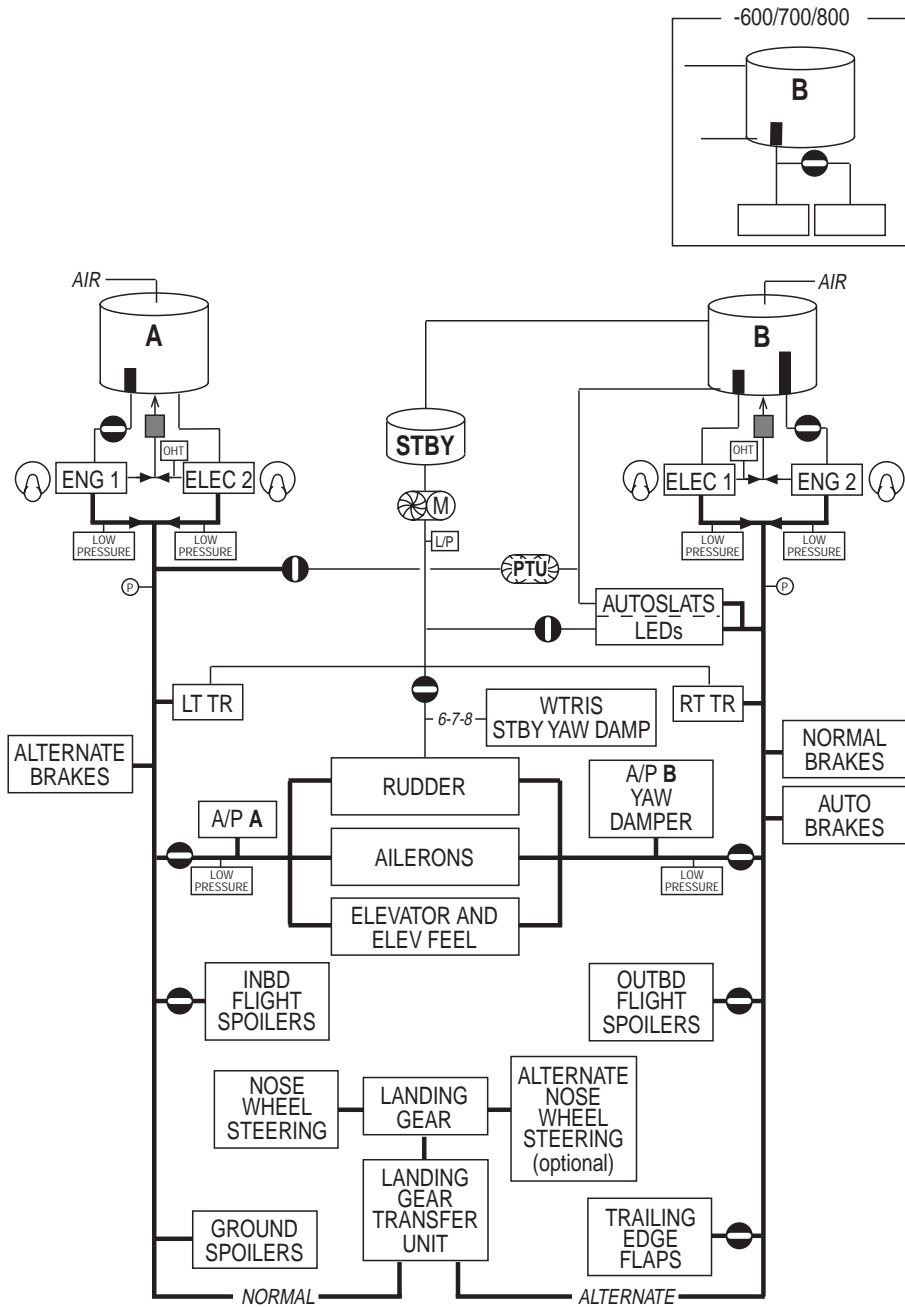
### 600 / 700 / 800 ELECTRICAL SCHEMATIC



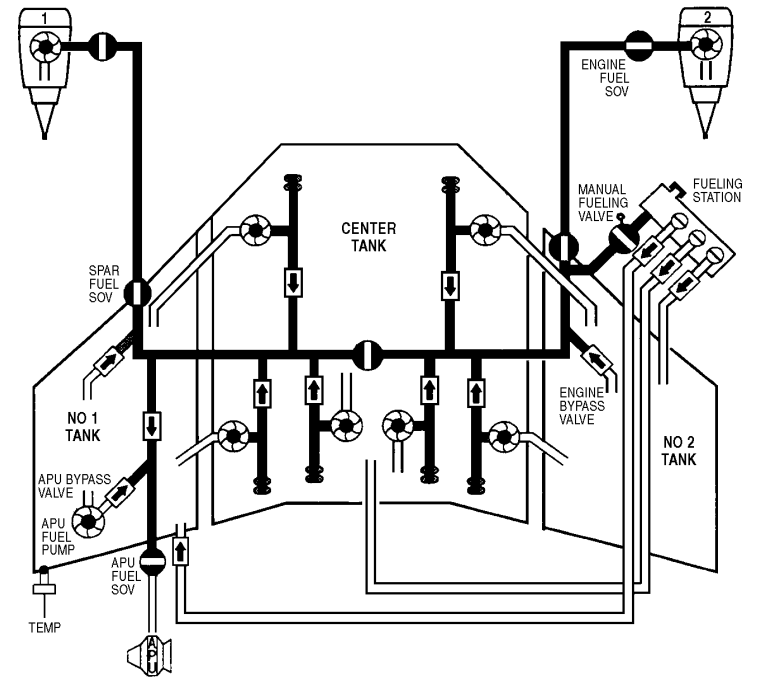
### 300 / 400 / 500 ELECTRICAL SCHEMATIC



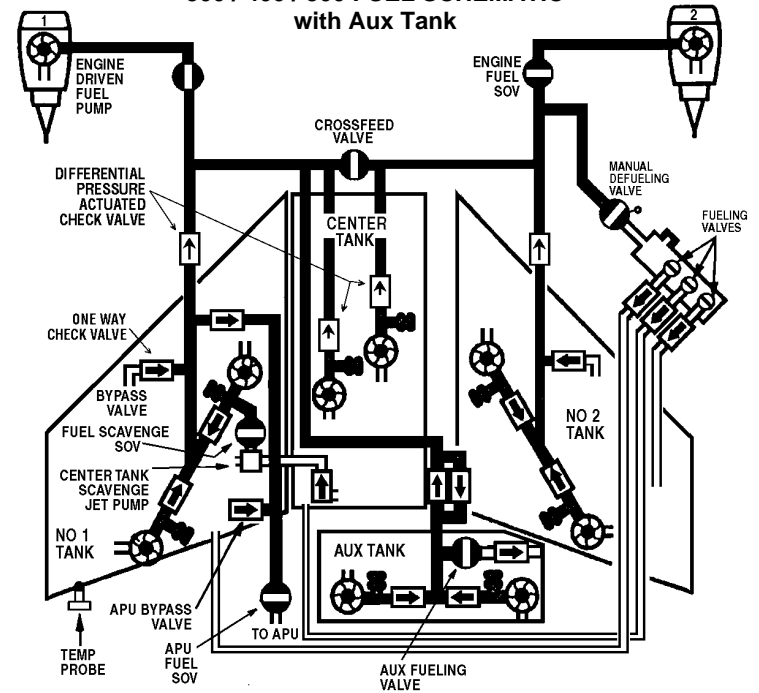
### HYDRAULIC SCHEMATIC



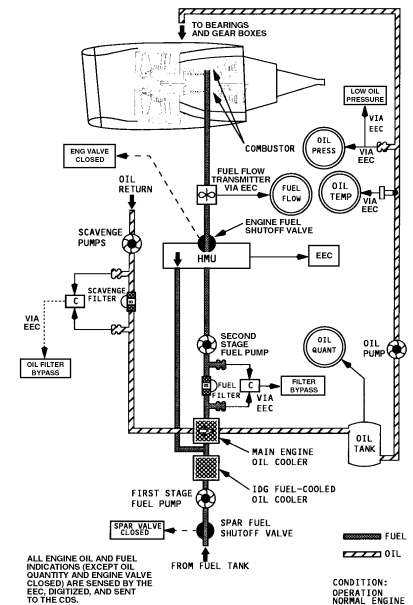
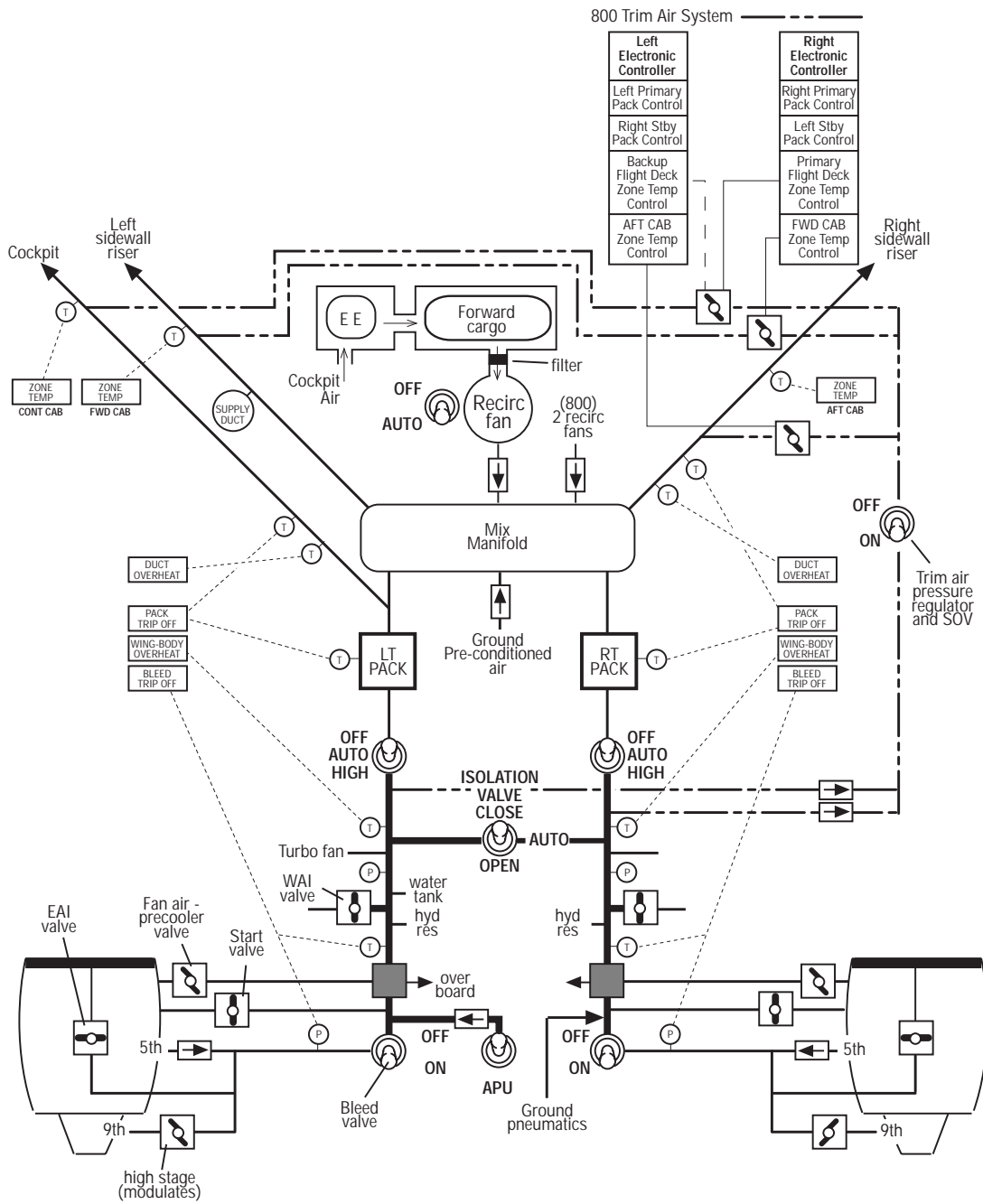
### 600 / 700 / 800 FUEL SCHEMATIC



### 300 / 400 / 500 FUEL SCHEMATIC with Aux Tank



# PNEUMATIC SYSTEM 300 thru 800



ENGINE FUEL AND OIL SYSTEM SCHEMATIC 600 / 700 / 800

ENGINE FUEL AND OIL SYSTEM SCHEMATIC 300 / 400 / 500

