

# LANDING CHART

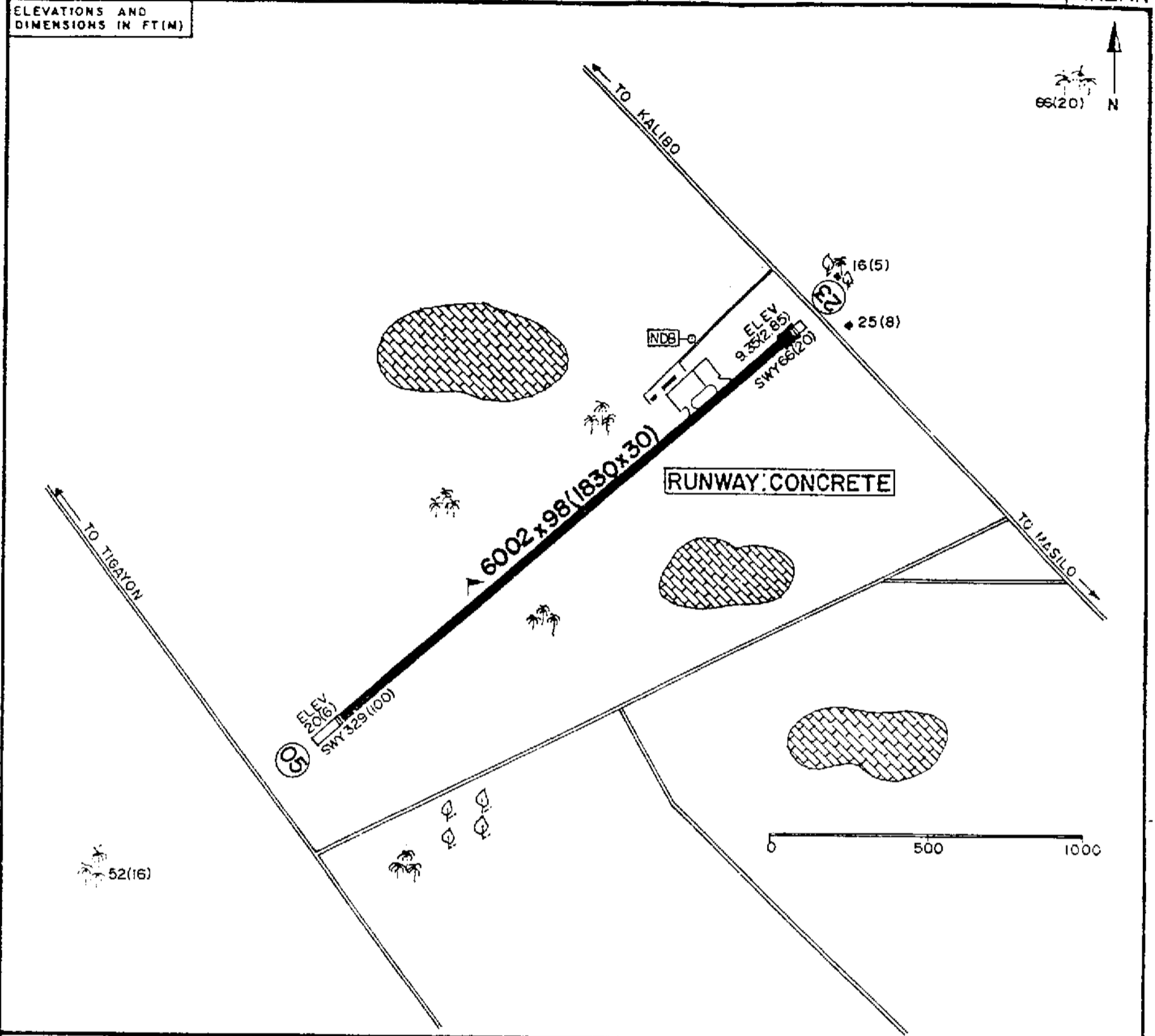
11°40'50.7"N 122°22'31.7"E

(3-3-29B)  
AERODROME ELEV  
20FT (6M)

RPVK  
KALIBO AIRPORT  
KALIBO, AKLAN

ELEVATIONS AND  
DIMENSIONS IN FT(M)

CHANGES : Airport particulars.



BEARING STRENGTH	PCN 34 RBWT
RUNWAY DESIGNATION	05/23
SLOPE	±0.17%
STOPWAY	66 / 329 (20 / 100)
CLEARWAY	66 / 329 (20 / 100)

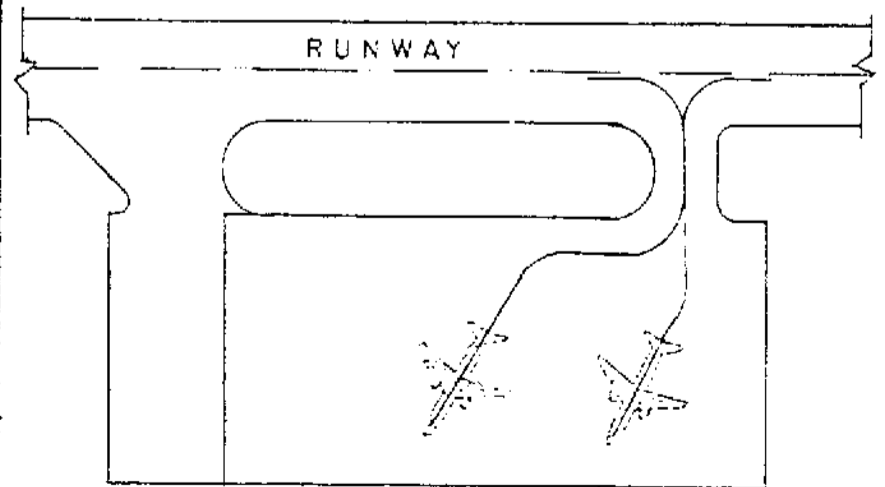
OTHERS:

1. STANDARD RUNWAY MARKINGS/MARKERS.
2. WINDCONE.
3. PAPI ON BOTH RUNWAYS.

CAUTION:

1. COCONUT GROVES, TREES, AND HOUSES ON BOTH APPROACH AREAS.
2. STRAY ANIMALS/PEDESTRIANS IN THE MOVEMENT AREAS.

PARKING POSITION : APRON DIMENSION: 80M x 200M  
(74M x 114M CONC.)



TERMINAL BUILDING

Tower

0 50 100

# VFR ARRIVAL CHART

LIPA VOR

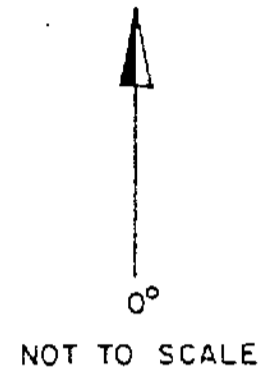
B472

TAPER  
N12 19.0 E121 51.2

141°

31

DELTA  
N1154.9 E12210.5



PROCEDURE EXCLUSIVELY  
FOR PAL INTERNAL USE

299° ROX  
112.9

343°  
100

79

R321°

KALIBO  
KL-298

Kalibo  
20(6)

FOR INBOUND ACFT :

Contact Kalibo Radio 123.1Mhz over DELTA Int. and  
proceed on a heading of 141° to Kalibo Apt.

CHANGE Minor

CHANGE

3-3-29A

RPVK

# VICINITY CHART

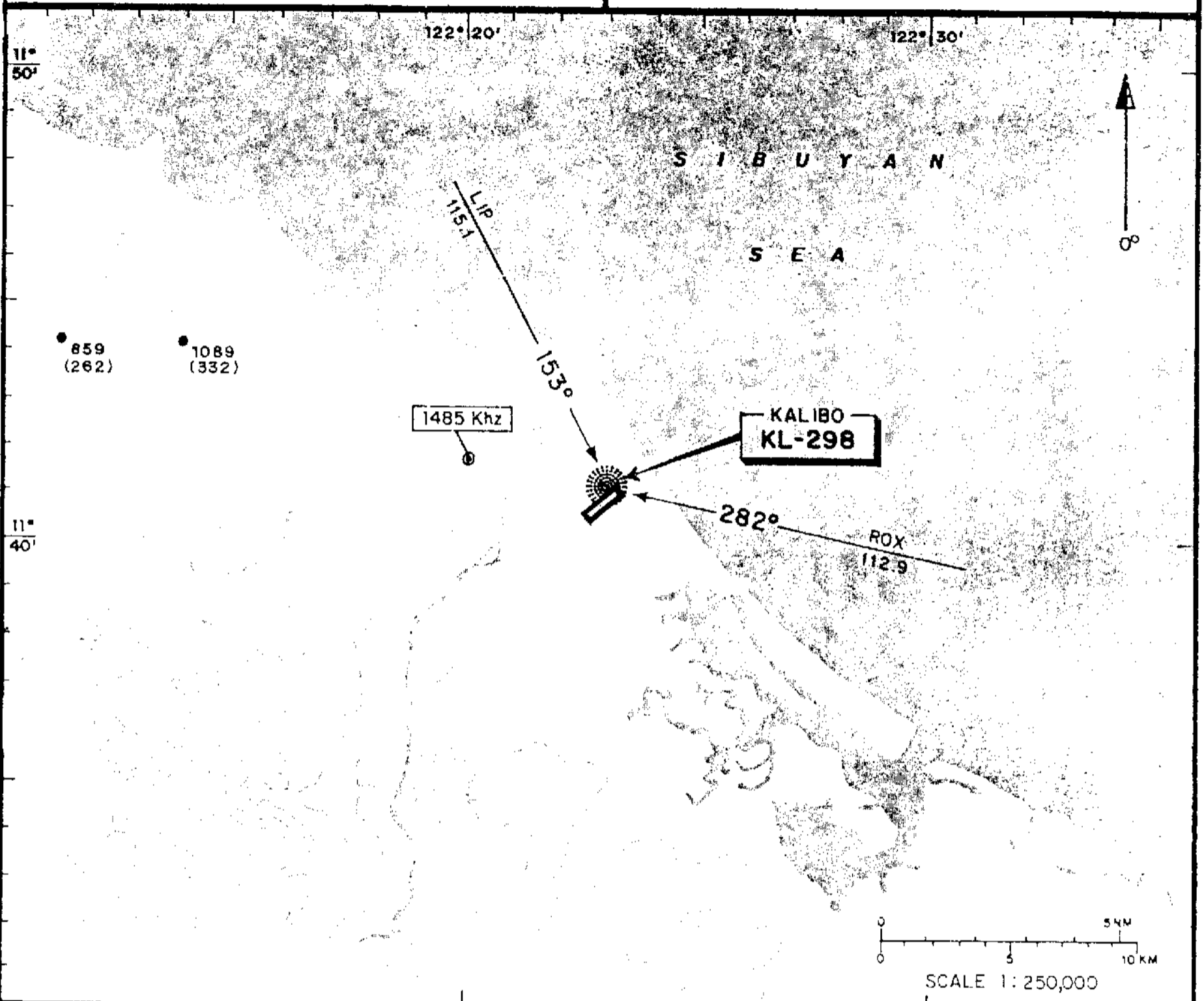
AERODROME ELEV  
20FT (6M)

## KALIBO, AKLAN

KALIBO

FSS : Kalibo Radio 123.1  
COMP : PAL Kalibo 130.0

ALL DESCENTS MUST BE VISUAL



CHANGES FSS.

INTENTIONALLY LEFT BLANK

MINIMUM SECTOR ALTITUDE

8000'

EMERGENCY SAFE ALTITUDE 9800'

Revision Action REPLACE