

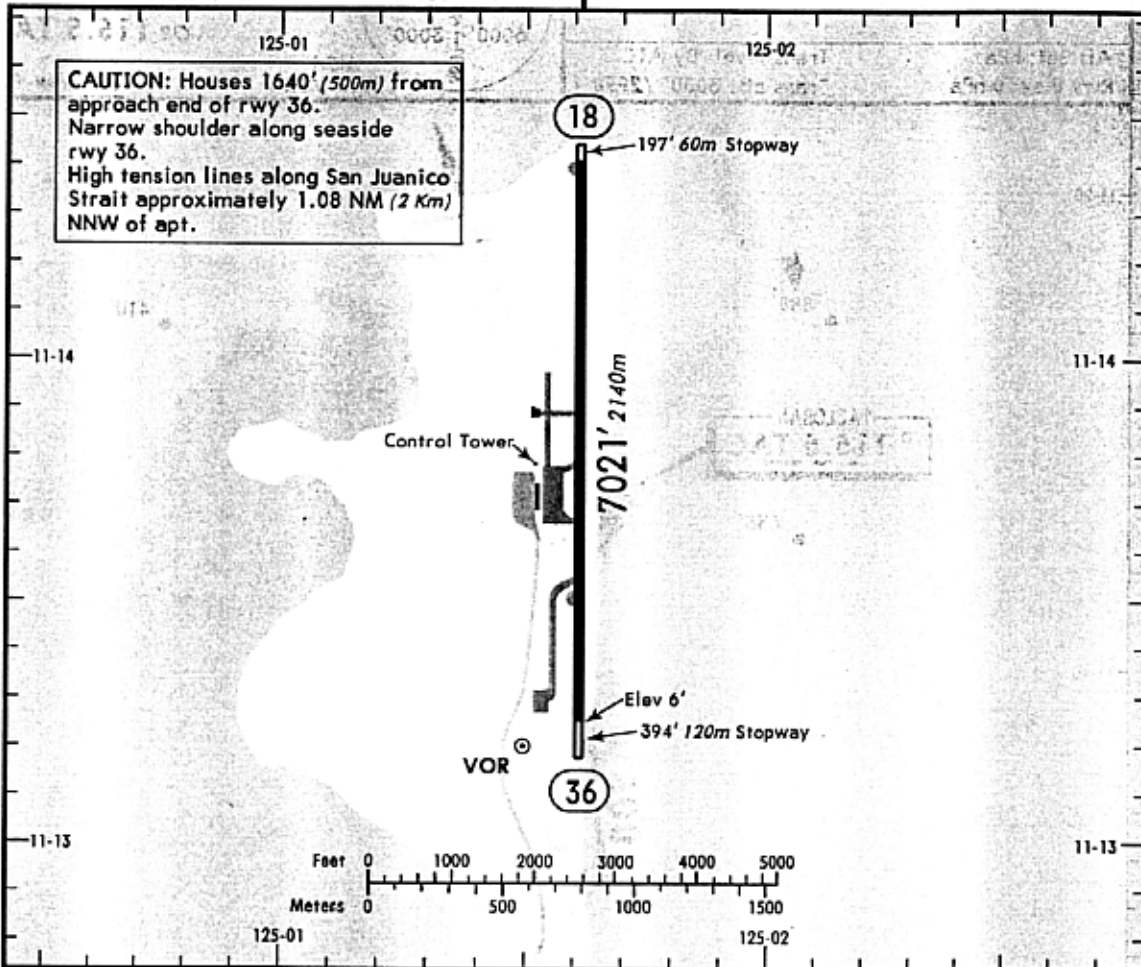
TACLOBAN, PHILIPPINES RPVA (13-1) 23 JUN 95

DANIEL Z ROMUALDEZ

N11 13.9 E125 01.5 TAC 115.5-On Airport

*TACLOBAN Tower 122.1

Elev 6' Var 0°



ADDITIONAL RUNWAY INFORMATION

RWY	PAPI	USABLE LENGTHS			WIDTH
		Threshold	Landing Beyond Glide Slope	TAKE-OFF	
18 36	PAPI				118' 36m

① First 1640' (500m) on runway 36 is 148' (45m) wide.

TAKE-OFF	
AIR CARRIER	
All Rwys	
A	
B	
C	400m
D	

CHANGES: Lighting, rwy 18 stopway.

23 JUN 95 (13-1)

TACLOBAN, PHILIPPINES

DANIEL Z ROMUALDEZ

CAT A, B & C VOR Rwy 36

VOR 115.5 TAC

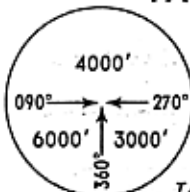
Apt. Elev 6'

*TACLOBAN Approach 120.8

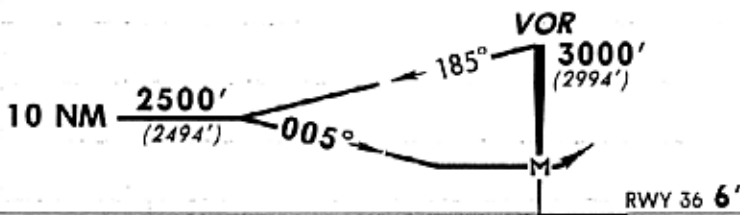
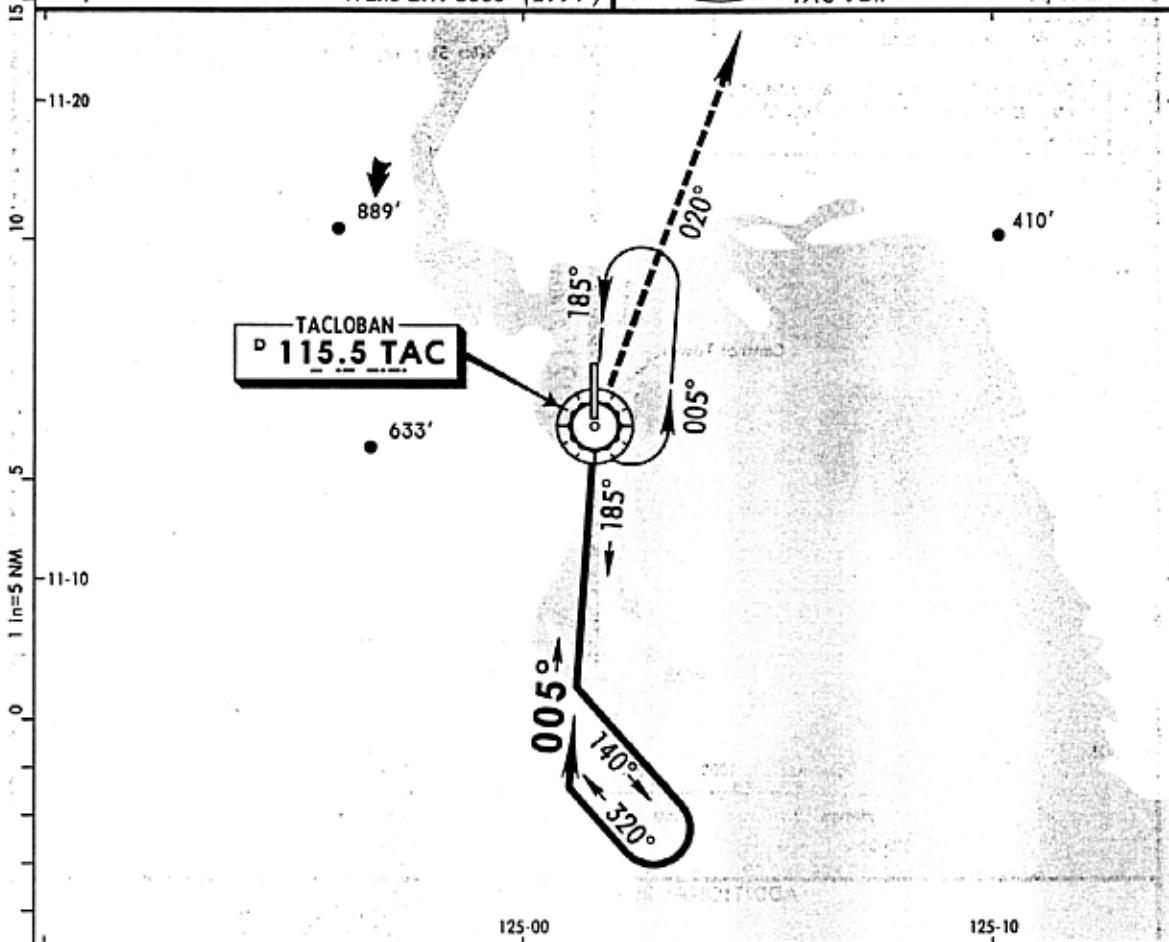
*TACLOBAN Tower 122.1

Alt Set: hPa
Rwy Elev: 0 hPa

Trans level: By ATC
Trans alt: 3000' (2994')



MSA
TAC VOR



MISSED APPROACH: Climb outbound on TAC VOR R-020 to 3000' within 10 NM, return to TAC VOR or as instructed by ATC.

STRAIGHT-IN LANDING RWY 36		CEILING REQUIRED	CIRCLE-TO-LAND		
MDA(H) 740' (734')		NIGHT	DAY		NIGHT
DAY			MDA(H)	CEIL-VIS	
A	800' - 1.61 km	NA	100	740' (734') 800' - 1.9 km	NA
B	800' - 3.2 km		135	740' (734') 800' - 3.7 km	
C	NOT APPLICABLE		180	740' (734') 800' - 3.7 km	
D	NOT APPLICABLE	D	NOT APPLICABLE		

1 NA in West Quadrant.

PANS OPS

MAP at VOR

CHANGES: Minimums.