

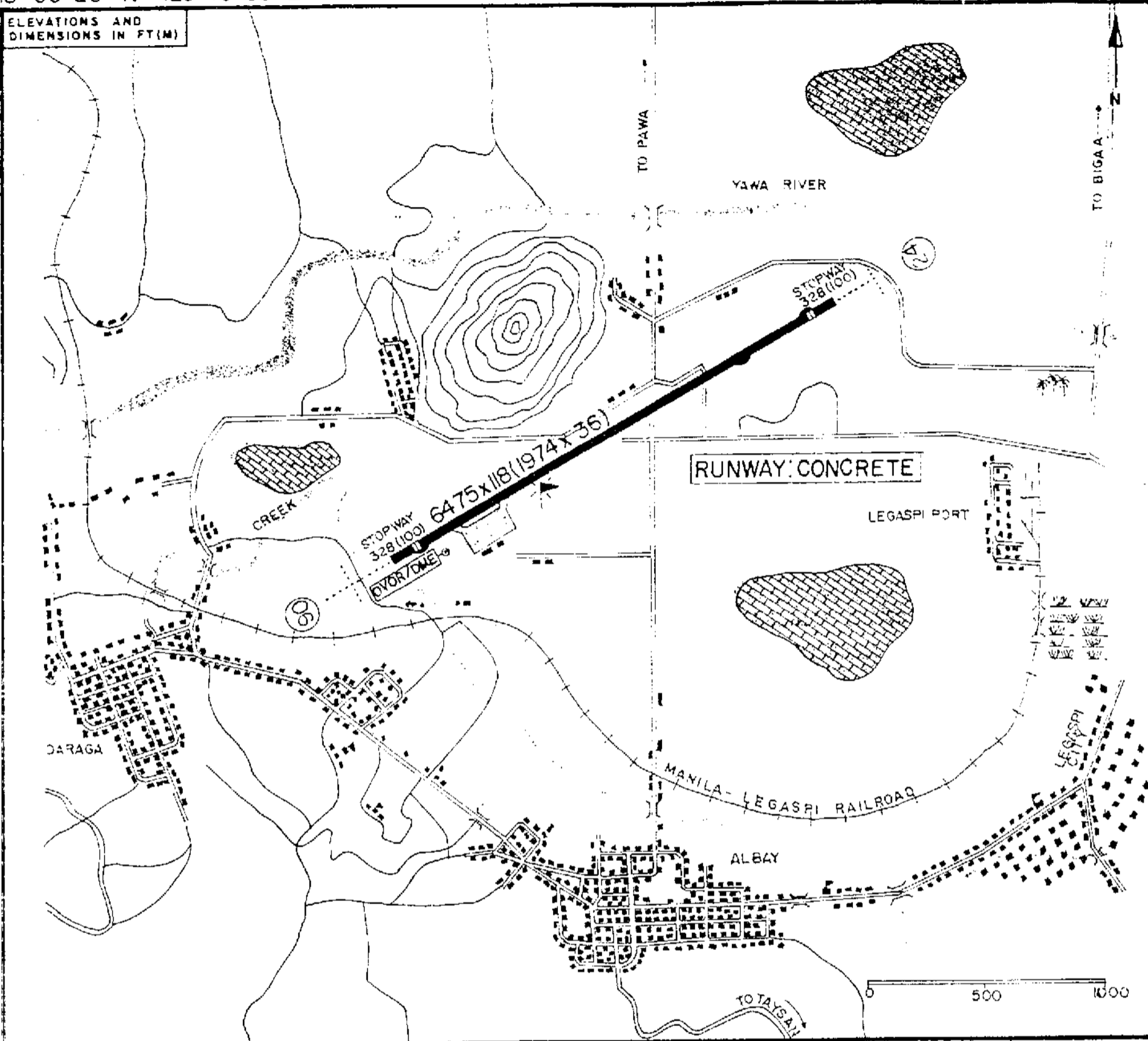
LANDING CHART

13°09'20" N 123°43'35" E

3339
AERODROME ELEV
66 FT (20M)

3040
LEGASPI AIRPORT
LEGASPI

ELEVATIONS AND
DIMENSIONS IN FT(M)

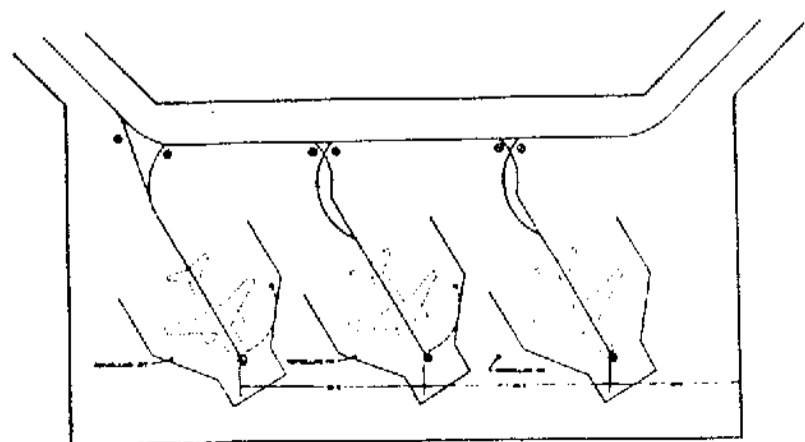


| | |
|--------------------|------------------|
| BEARING STRENGTH | PCN 29.5 RBWT |
| RUNWAY DESIGNATION | 06/24 |
| SLOPE | 0.71 |
| STOPWAY | 328/328(100/100) |
| CLEARWAY | 853/328(260/100) |

- OTHERS:
1. DISTANCE-TO-GO MARKERS.
 2. LIGHTED WIND DIRECTION INDICATOR.
 3. ROTATING BEACON.
 4. RWY THRESHOLD LIGHT & SALS ON BOTH RWY WITH INTENSITY CONTROL.
 5. STANDARD RUNWAY MARKINGS.
 6. DVOR/DME DISTANCE:
FROM START RWY 06 = 60M
FROM START RWY 24 = 1914M
 7. PAPI FOR BOTH RWY 06/24. GLIDE PATH ANGLE = 3.6 DEGREES.

- CAUTION:
1. STRAY ANIMALS/PEDESTRIANS IN THE AIRCRAFT MOVEMENT AREAS.
 2. HILLS ON APPROACH AREA OF RWY 06.
 3. RADIOSONDE BALLOON RELEASED DAILY TO A MINIMUM OF 21,304 FT.
 4. ANTENNA 100FT HIGH ATOP THE CONTROL TOWER.

PARKING POSITION: APRON DIMENSION: 200 x 100M



TERMINAL BUILDING

0 50 100

LEGASPI AIRPORT

LEGASPI AIRPORT

3-3-31

RPMP

DVOR / DME Rwy 24

TRANS ALT
5000'

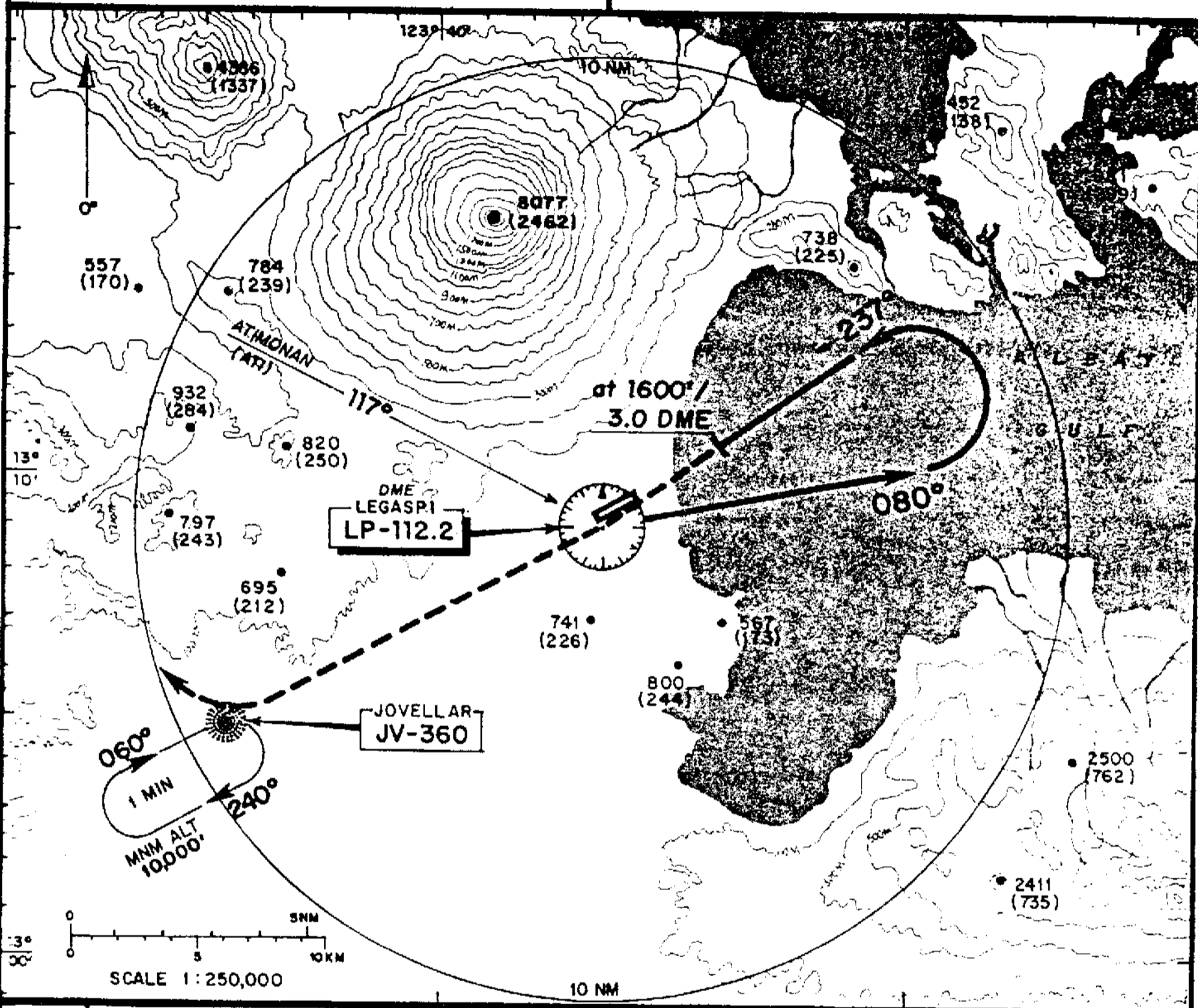
AERODROME ELEV
66 FT (20 M)

LEGASPI, ALBAY

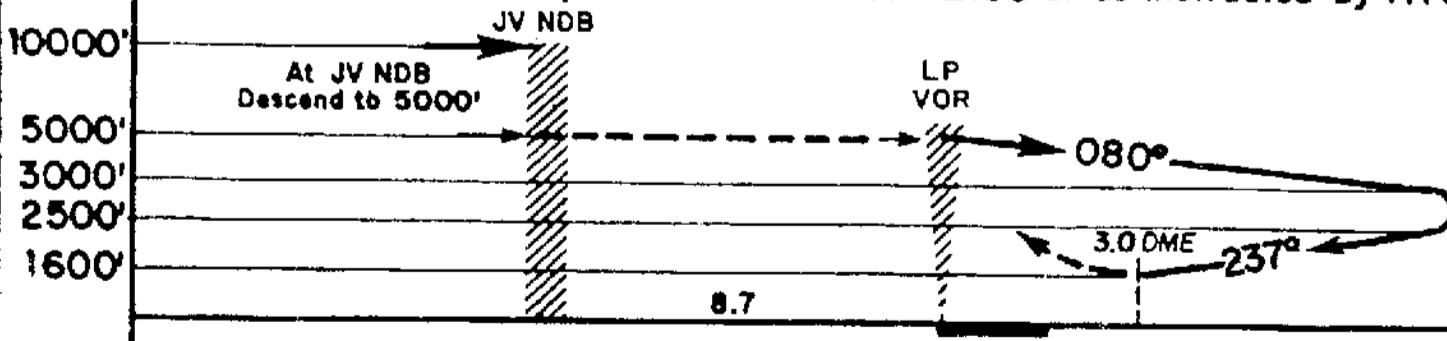
LEGASPI

TWR : Legaspi Tower 123.3
COMP : PAL Legaspi 130.0

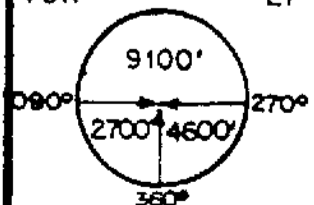
CHANGE NEW PUBLICATION



MISSED APPROACH PROCEDURE: If not visual at 1600'/3.0 DME, make a continuous straight-out climb towards the VOR, thence JV NDB at FL100 or as instructed by ATC.



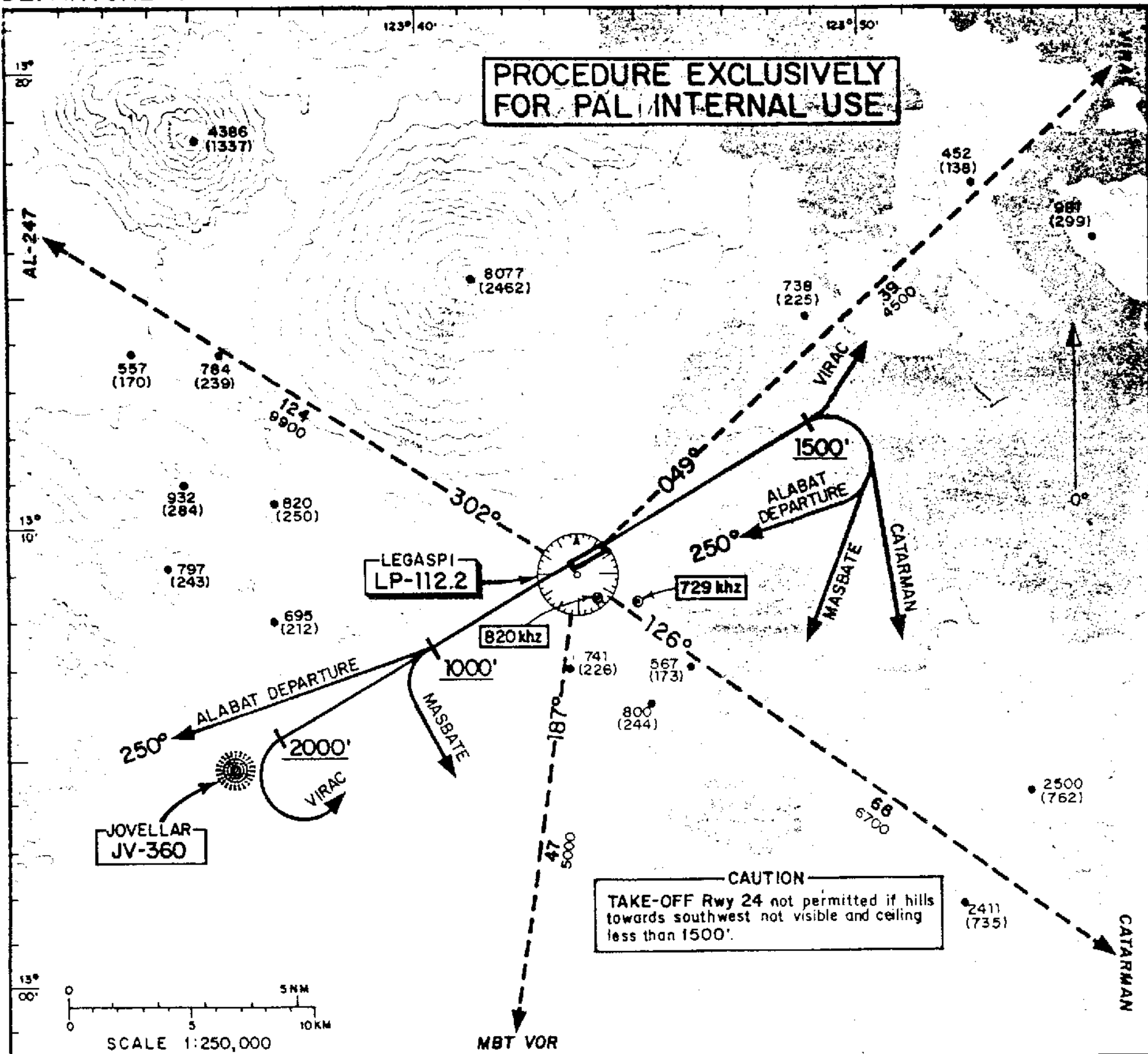
MINIMUM SECTOR ALTITUDE



EMERGENCY SAFE ALTITUDE 9900'

LEGASPI

DEPARTURE CHART



CHANGE : See other side

DEPARTURE ROUTE DESCRIPTION

| | |
|---|--|
| <p>LEGASPI - MANILA via Alabat NDB TAKE-OFF Rwy 06 : RIGHT turn passing 1500'. TAKE-OFF Rwy 24 : Straight out climb.</p> | <p>Climb on a heading of 250° before proceeding on course to Alabat NDB.</p> |
| <p>LEGASPI - VIRAC TAKE-OFF Rwy 06 : Straight out climb. TAKE-OFF Rwy 24 : LEFT turn passing 2000'.</p> | <p>Intercept and track outbound bearing R049 / LP VOR to Virac.</p> |
| <p>LEGASPI - MACTAN via Masbate VOR TAKE-OFF Rwy 06 : RIGHT turn passing 1500'. TAKE-OFF Rwy 24 : LEFT turn passing 1000'.</p> | <p>Intercept and track inbound R007 / MBT VOR and continue climb on course to cruising altitude.</p> |
| <p>LEGASPI - CATARMAN TAKE-OFF Rwy 06 : RIGHT turn passing 1500'. TAKE-OFF Rwy 24 : LEFT turn passing 2000'.</p> | <p>Proceed on course.</p> |
| <p>LEGASPI - MASBATE TAKE-OFF Rwy 06 : RIGHT turn passing 1500'. TAKE-OFF Rwy 24 : LEFT turn passing 1000'.</p> | <p>Intercept and track inbound R007 / MBT VOR and continue climb on course.</p> |