

A. GENERAL

1. NAP
RWY 24 determined as noise preferential RWY if crosswind component MAX 15KT or tailwind component MAX 5KT.
2. SPEED
MAX IAS 250KT at or below 10000 within D30 MIA. Speed control may be suspended by ATC.
3. NAV RESTRICTION
VOR CAB unusable:
R350-R070 beyond 40NM below 8500
R070-R100 beyond 40NM below 9500
R100-R140 beyond 40NM below 8500
R140-R170 beyond 40NM below 6000
R170-R200 beyond 40NM below 3000
R200-R290 beyond 40NM below 6000
R290-R350 beyond 40NM below 4000
4. TRAFFIC NOTES
 - 4.1 Right hand circuit RWY 06.
 - 4.2 RWL and TWL on a fixed intensity.
5. RWY RESTRICTION
 - 5.1. RWY 06/24:
FRI-SUN 16-20 RWY CLSD for MAINT.
 - 5.2. RWY 13/31:
OPS limited up to A300 type of ACFT (EXC for B737-200 and DC9).
LDG during daylight only.
TKOF and LDG must comply with existing NAP.
TKOF RWY 13 from TWY F1 and F1B prohibited.
6. TWY RESTRICTION
 - 6.1 TWY width 21M except:
TWYs feeding RWY 06 and 24 width 22M.
 - 6.2 Caution when taxiing from TWY C to the tarmac, narrow turns and soft shoulders.

B. ARRIVAL

1. NAP
Arriving traffic from the North will normally be RAD vectored to right base leg at MNM 2000.
2. TAXI
 - 2.1 After landing:
121.90 after vacating the RWY.
121.70 before entering apron.
 - 2.2 Nosewheel taxi guidelines on apron except for stands 9 and 10.
3. PARKING INTL APRON
 - 3.1 Stands 3-7, 10-15, C18, C19 and 20-24 avbl for B747-400.
 - 3.2 Stand 1 avbl for MAX A300.
Stand 8 only avbl for VIP ACFT.
Stand 9 avbl for MAX B767/A300.
4. TRAFFIC NOTES
RWY 06 and 24 very slippery when wet, extreme caution after landing advised.

C. DEPARTURE

1. START UP / PUSHBACK
 - 1.1 Start up-taxi:
-125.10 Call DLV 10MIN (AWY G467/ G577 25MIN) prior ENG start-up, and request ATC clearance.
Give parking PSN, FL, DEST.

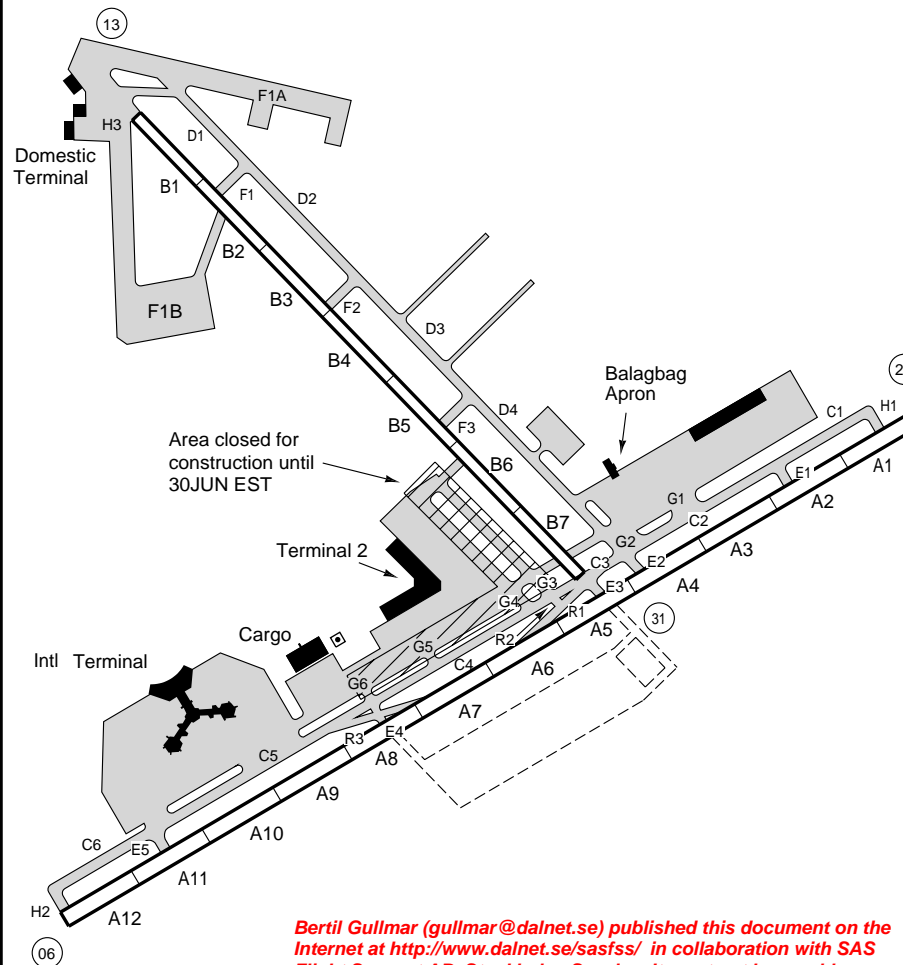
-121.70 Request push-back, start-up clearance when ready.
Ask for taxi clearance.

-121.90 Prior entering main TWY.
 - 1.2 Push-back compulsory at Ramp for all ACFT with APU to perform push-back with ENG off, or only one ENG running.
2. SID
RWY 13: SR-SS, VMC only.
After TKOF turn as instructed by ATC to climb/descent area to MNM 3000 , then intercept assigned AWY.

MANILA NINYO AQUINO INTERNATIONAL PHILIPPINES

TRAFFIC BLOCKS

NOT FOR OPERATIONAL USE

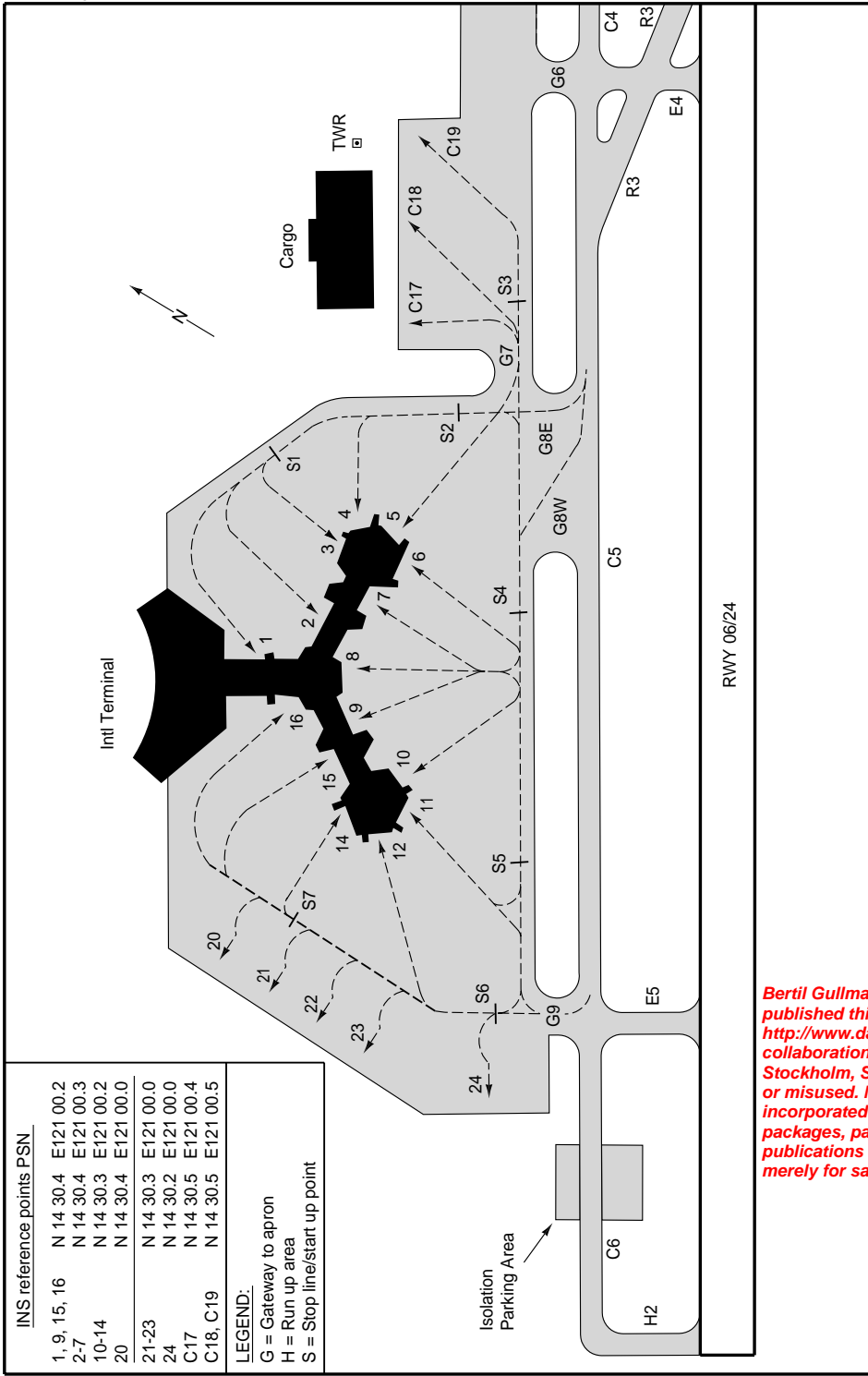


Bertil Gullmar (gullmar@dalnet.se) published this document on the Internet at <http://www.dalnet.se/sasfs/> in collaboration with SAS Flight Support AB, Stockholm, Sweden. It must not be resold or misused. Moreover, it must not be incorporated into any other shareware packages, payware or CD-ROM's, publications or periodicals prepared merely for sale, without our permission.

© SAS Flight Support - /// - 300 - W - P

INS reference points PSN		
1-9, 15, 16	N 14 30.4	E121 00.2
2-7	N 14 30.4	E121 00.3
10-14	N 14 30.3	E121 00.2
20	N 14 30.4	E121 00.0
21-23	N 14 30.3	E121 00.0
24	N 14 30.2	E121 00.0
C17	N 14 30.5	E121 00.4
C18, C19	N 14 30.5	E121 00.5

LEGEND:
 G = Gateway to apron
 H = Run up area
 S = Stop line/start up point

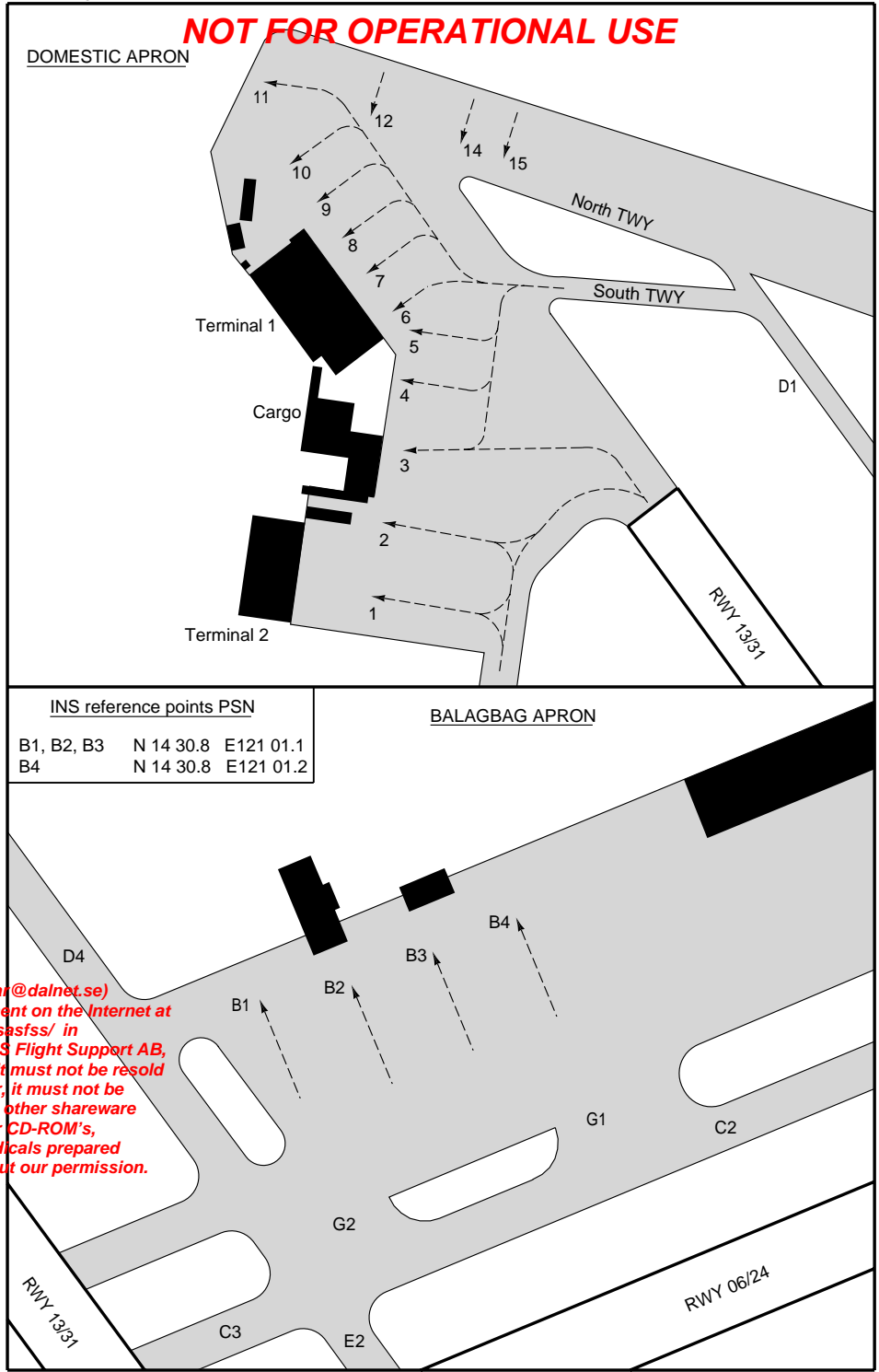


Change: TWY

Bertil Gullmar (gullmar@dalnet.se) published this document on the Internet at <http://www.dalnet.se/sasfss/> in collaboration with SAS Flight Support AB, Stockholm, Sweden. It must not be resold or misused. Moreover, it must not be incorporated into any other shareware packages, payware or CD-ROM's, publications or periodicals prepared merely for sale, without our permission.

M A N I L A
N I N O Y
A Q U I N O
I N T L
P H I L I P P I N E S

NOT FOR OPERATIONAL USE



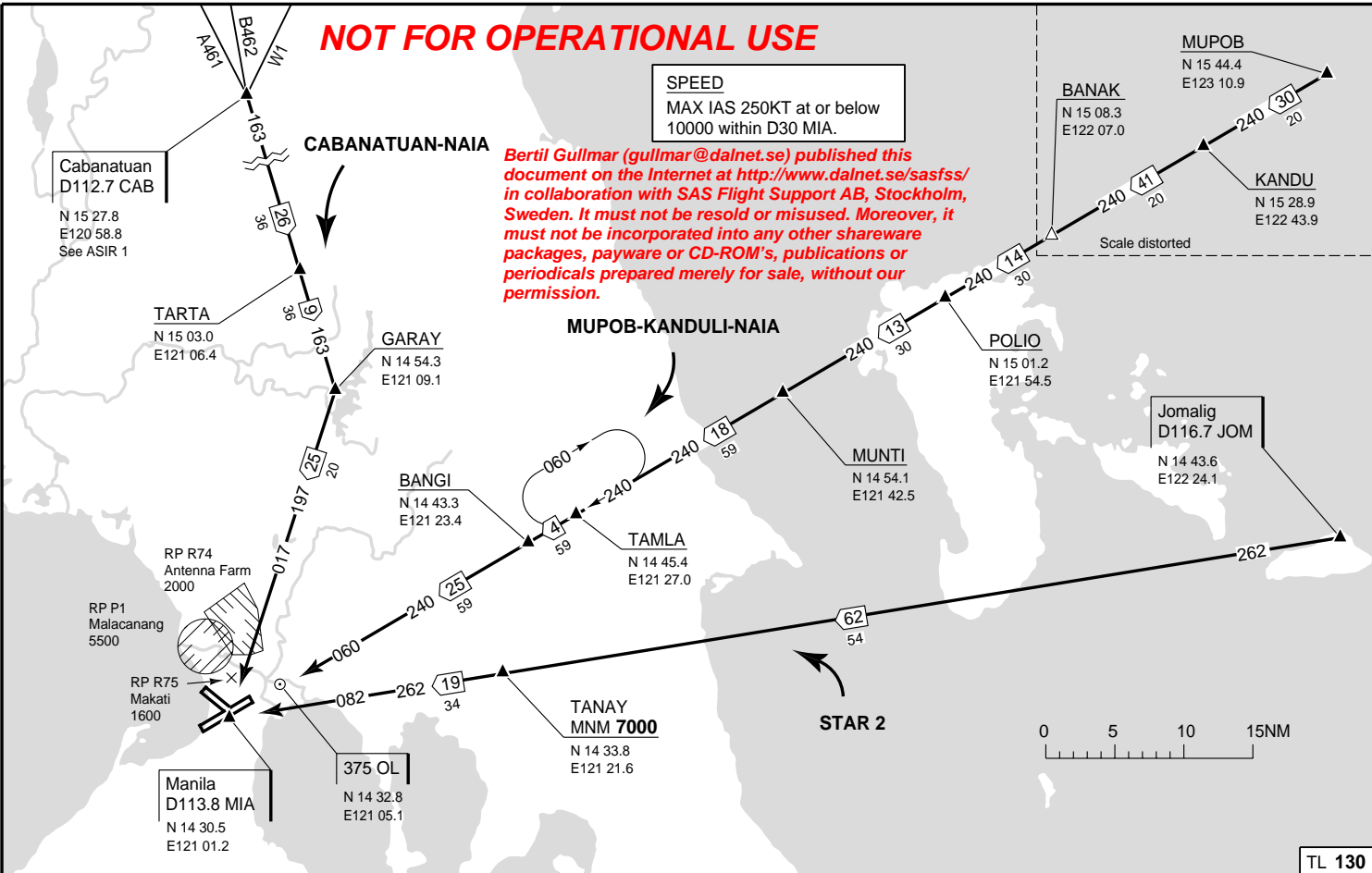
INS reference points PSN		
B1, B2, B3	N 14 30.8	E121 01.1
B4	N 14 30.8	E121 01.2

Change: TWY

NOT FOR OPERATIONAL USE

SPEED
 MAX IAS 250KT at or below
 10000 within D30 MIA.

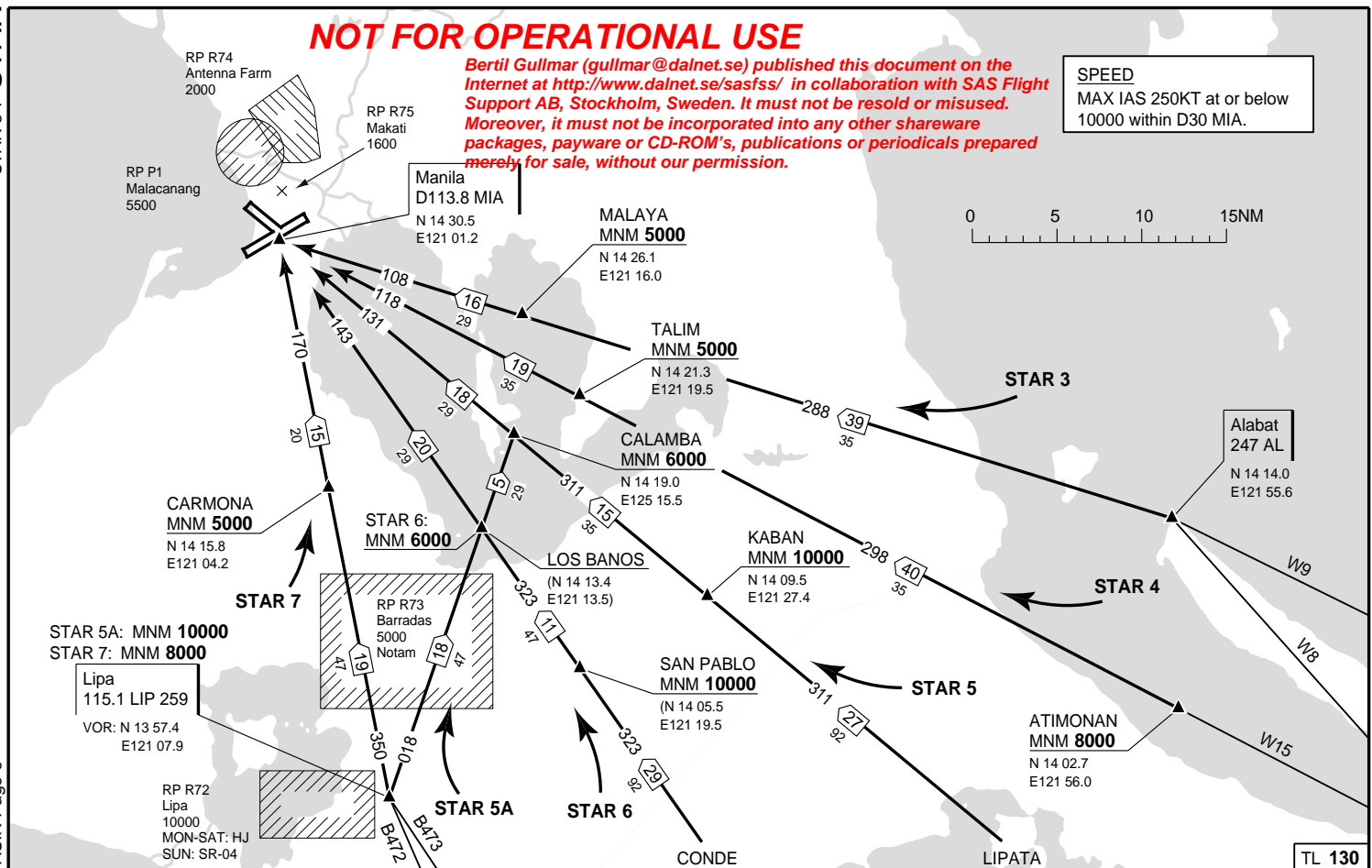
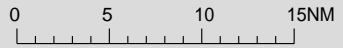
Bertil Gullmar (gullmar@dalnet.se) published this document on the Internet at <http://www.dalnet.se/sasfss/> in collaboration with SAS Flight Support AB, Stockholm, Sweden. It must not be resold or misused. Moreover, it must not be incorporated into any other shareware packages, payware or CD-ROM's, publications or periodicals prepared merely for sale, without our permission.



NOT FOR OPERATIONAL USE

Bertil Gullmar (gullmar@dalnet.se) published this document on the Internet at <http://www.dalnet.se/sasfss/> in collaboration with SAS Flight Support AB, Stockholm, Sweden. It must not be resold or misused. Moreover, it must not be incorporated into any other shareware packages, payable or CD-ROM's, publications or periodicals prepared merely for sale, without our permission.

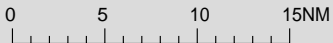
SPEED
 MAX IAS 250KT at or below 10000 within D30 MIA.



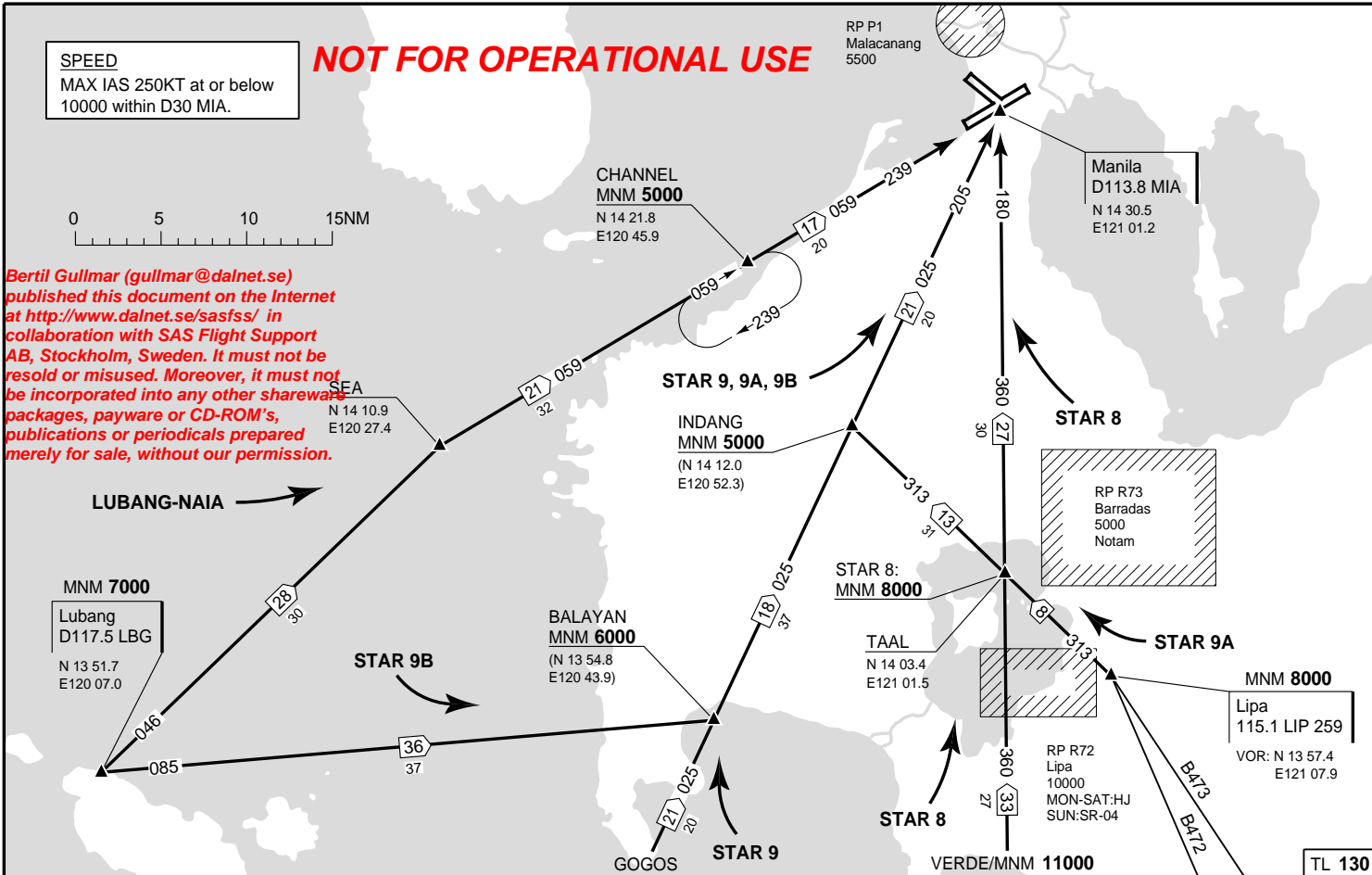
NOT FOR OPERATIONAL USE

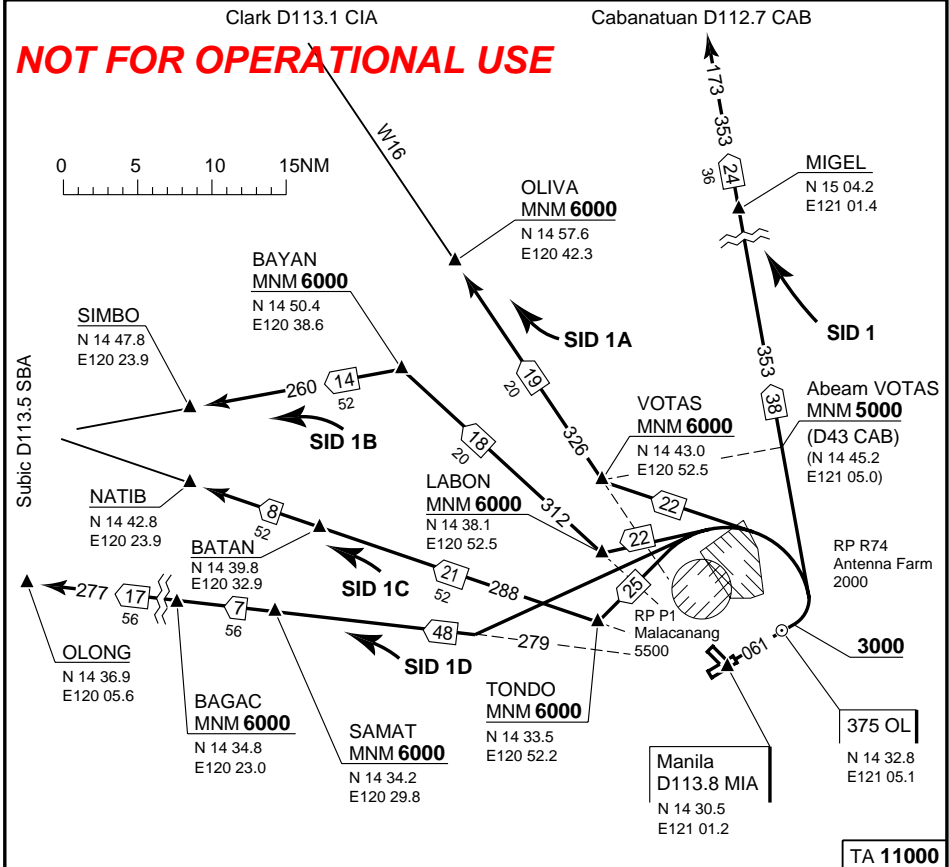
SPEED

MAX IAS 250KT at or below
10000 within D30 MIA.



Bertil Gullmar (gullmar@dalnet.se) published this document on the Internet at http://www.dalnet.se/sasfs/ in collaboration with SAS Flight Support AB, Stockholm, Sweden. It must not be resold or misused. Moreover, it must not be incorporated into any other shareware packages, payware or CD-ROM's, publications or periodicals prepared merely for sale, without our permission.





TA 11000

SPEED
 MAX IAS 250KT at or below 10000 within D30 MIA.

INITIAL CLIMB
 Climb on HDG 061° to 3000 - turn L - (avoid RP P1) -

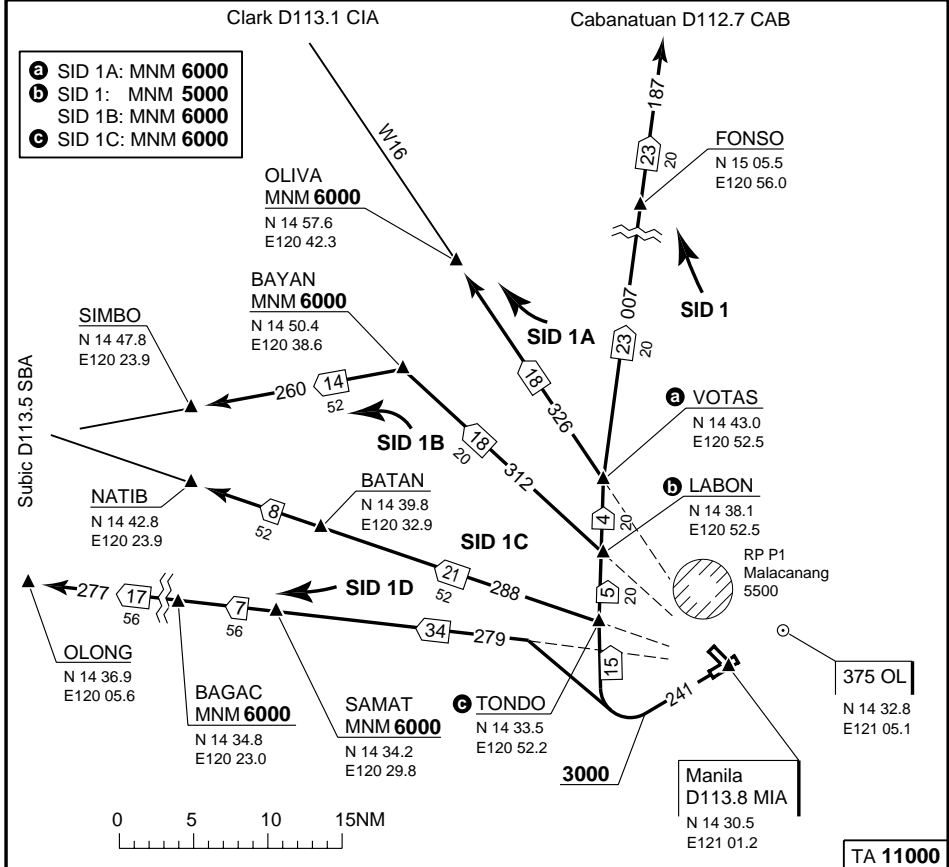
SID 1 / CABANATUAN DEP
 R173 CAB - MIGEL - CAB.
 -Cross abeam VOTAS: MNM 5000

SID 1A / CLARK DEP
 R326 MIA - VOTAS - OLIVA.
 -Cross VOTAS: MNM 6000
 -Cross OLIVA: MNM 6000

SID 1B / SUBIC 1 DEP
 R312 MIA - LABON - BAYAN - SIMBO.
 -Cross LABON: MNM 6000
 -Cross BAYAN: MNM 6000

SID 1C / SUBIC 2 DEP
 R288 MIA - TONDO - BATAN - NATIB.
 -Cross TONDO: MNM 6000

SID 1D / SUBIC 3 DEP
 R279 MIA - SAMAT - BAGAC - OLONG.
 -Cross SAMAT: MNM 6000
 -Cross BAGAC: MNM 6000



TA 11000

SPEED
 MAX IAS 250KT at or below 10000 within D30 MIA.

INITIAL CLIMB
 Climb on HDG 241° to 3000 - turn R -

SID 1 / CABANATUAN DEP
 R187 CAB - TONDO - LABON - VOTAS - FONSO - CAB.
 -Cross LABON: MNM 5000

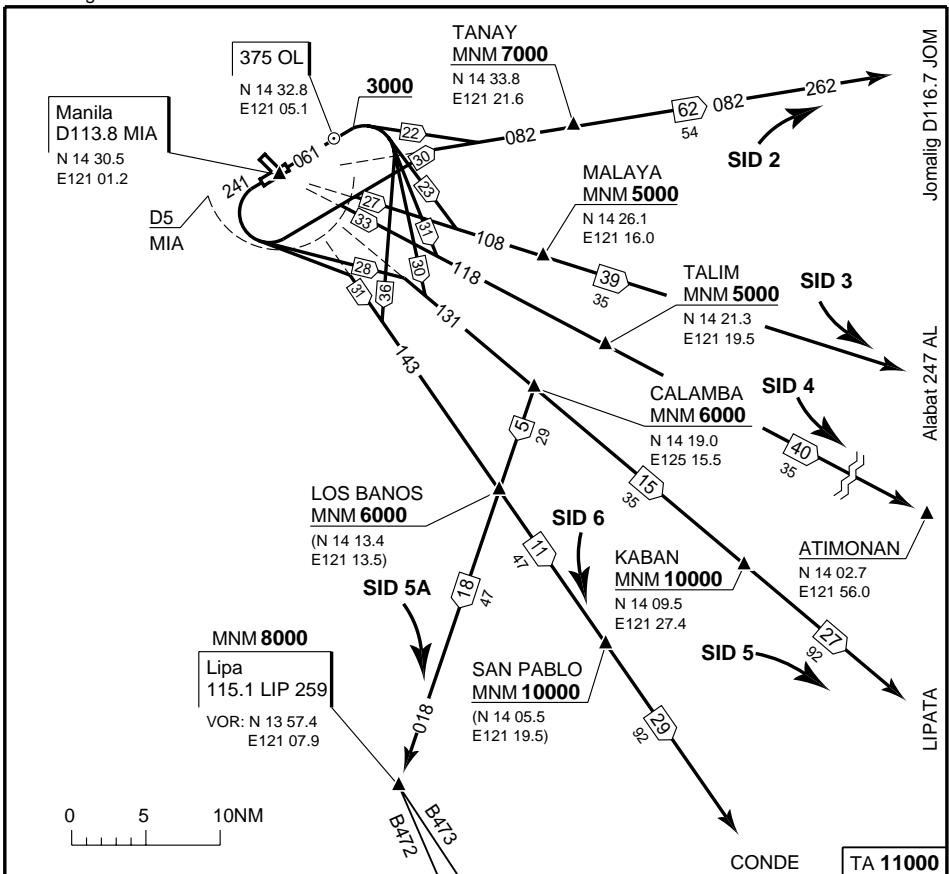
SID 1A / CLARK DEP
 VOTAS - R326 MIA - OLIVA.
 -Cross VOTAS: MNM 6000
 -Cross OLIVA: MNM 6000

SID 1B / SUBIC 1 DEP
 R312 MIA - LABON - BAYAN - SIMBO.
 -Cross LABON: MNM 6000
 -Cross BAYAN: MNM 6000

SID 1C / SUBIC 2 DEP
 R288 MIA - TONDO - BATAN - NATIB.
 -Cross TONDO: MNM 6000

SID 1D / SUBIC 3 DEP
 R279 MIA - SAMAT - BAGAC - OLONG.
 -Cross SAMAT: MNM 6000
 -Cross BAGAC: MNM 6000

Bertil Gullmar (gullmar@dalnet.se) published this document on the Internet at <http://www.dalnet.se/sasfss/> in collaboration with SAS Flight Support AB, Stockholm, Sweden. It must not be resold or misused. Moreover, it must not be incorporated into any other shareware packages, payware or CD-ROM's, publications or periodicals prepared merely for sale, without our permission.



SPEED
MAX IAS 250KT at or below 10000 within D30 MIA.

INITIAL CLIMB (RWY 06)
Climb on HDG 061° to 3000 - turn R -

INITIAL CLIMB (RWY 24)
Climb on HDG 241° - turn L within D5 MIA -

SID 2 / JOMALIG DEP
R082 MIA - TANAY - JOM.
-Cross TANAY: MNM 7000

SID 3 / ALABAT DEP
R108 MIA - MALAYA - AL.
-Cross MALAYA: MNM 5000

SID 4 / LEGASPI DEP
R118 MIA - TALIM - ATIMONAN.
-Cross TALIM: MNM 5000

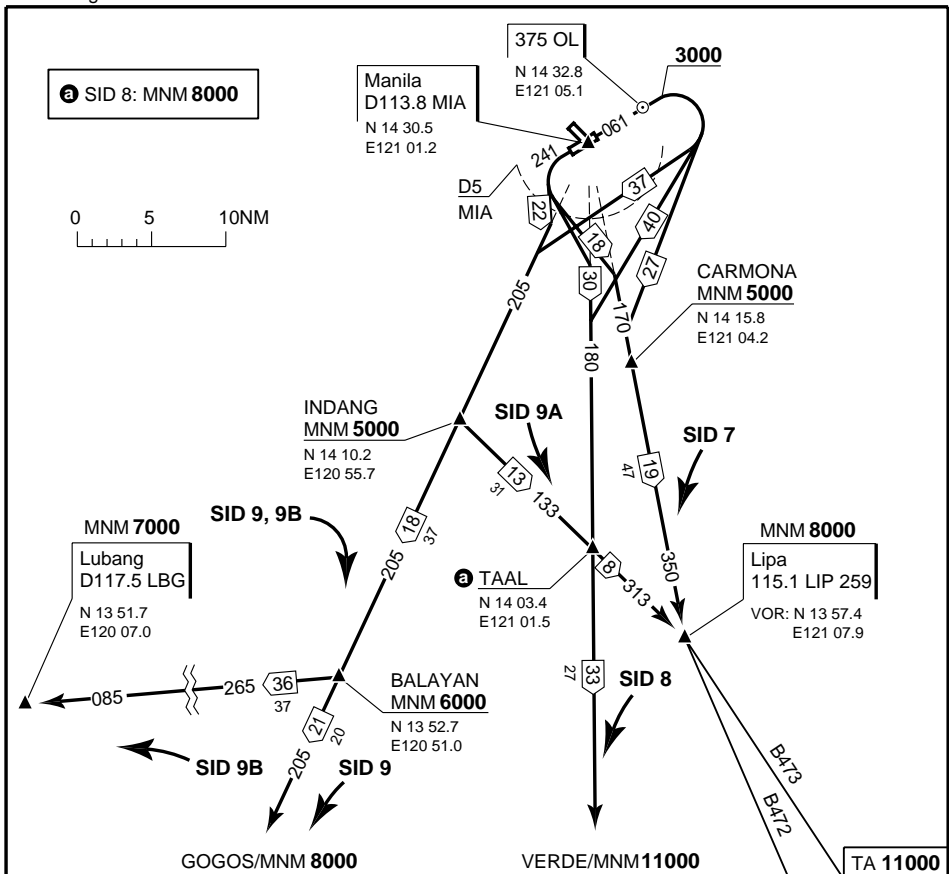
SID 5 / MASBATE DEP
R131 MIA - CALAMBA - KABAN - LIPATA.
-Cross CALAMBA: MNM 6000
-Cross KABAN: MNM 10000

SID 5A / MACTAN 1 DEP
R131 MIA - CALAMBA - R018 LIP - LIP.
-Cross CALAMBA: MNM 6000
-Cross LOS BANOS: MNM 6000
-Cross LIP: MNM 8000

SID 6 / MACTAN 2 DEP
R143 MIA - LOS BANOS - SAN PABLO - CONDE.
-Cross LOS BANOS: MNM 6000
-Cross SAN PABLO: MNM 10000

NOT FOR OPERATIONAL USE

MANILA
Jomalig D116.7 JOM
ALABAT 247 AL
LIPATA
CONDE
TA 11000



SPEED
MAX IAS 250KT at or below 10000 within D30 MIA.

INITIAL CLIMB (RWY 06)
Climb on HDG 061° to 3000 - turn R -

INITIAL CLIMB (RWY 24)
Climb on HDG 241° - turn L within D5 MIA -

SID 7 / Mactan 3 DEP
R170 MIA - CARMONA - R350 LIP - LIP.
-Cross CARMONA: MNM 5000
-Cross LIP: MNM 8000

SID 8 / Zamboanga DEP
R180 MIA - TAAL - VERDE.
-Cross TAAL: MNM 8000
-Cross VERDE: MNM 11000

SID 9 / Puerto DEP
R205 MIA - INDANG - BALAYAN - GOGOS.
-Cross INDANG: MNM 5000
-Cross BALAYAN: MNM 6000
-Cross GOGOS: MNM 8000

SID 9A / Iloilo DEP
R205 MIA - INDANG -R313 LIP - TAAL - LIP.
-Cross INDANG: MNM 5000
-Cross LIP: MNM 8000

SID 9B / Lubang DEP
R205 MIA - INDANG - BALAYAN - R085 LBG - LBG
-Cross INDANG: MNM 5000
-Cross BALAYAN: MNM 6000
-Cross LBG: MNM 7000

*Bertil Gullmar (gullmar@dalnet.se)
published this document on the Internet at
http://www.dalnet.se/sasfss/
in collaboration with SAS Flight Support AB,
Stockholm, Sweden. It must not be
resold or misused. Moreover, it must not be
incorporated into any other shareware
packages, payware or CD-ROM's,
publications or periodicals prepared
merely for sale, without our permission.*

© SAS Flight Support - CUS - 300 - W - P