

General Info

, PHL

N 10° 42' 53.0 E122° 32' 37.0 Magnetic Variation: 0.0°W

Elevation: 18'

Public, Control Tower, IFR, No Fee, Rotating Beacon,
Customs Info Unavailable

Time Zone Info: GMT+8:00 no DST

Runway Info

Runway 02-20 6890' x 118' asphalt

Runway 02 (20.0°M) TDZE 13'

Runway 20 (200.0°M) TDZE 8'

Displaced Threshold Distance 492'

Communications Info

Iloilo Tower **52.05**

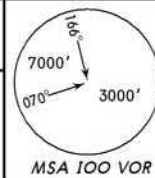
Iloilo Tower **123.4**

Iloilo Tower **38.725**

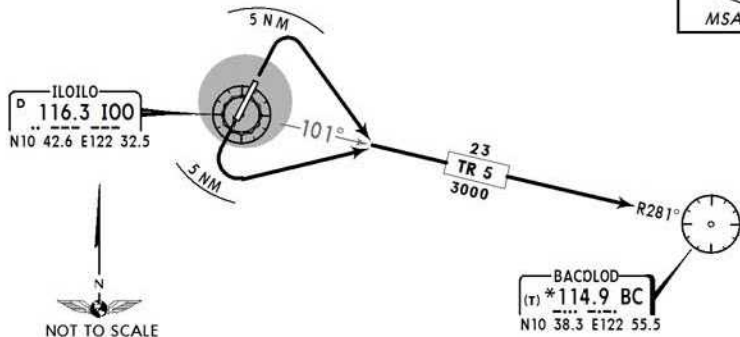
Bacolod Approach Control **121.0** Arrival Service MF

Notebook Info

Apt Elev 18' Trans level: FL130 Trans alt: 11000'



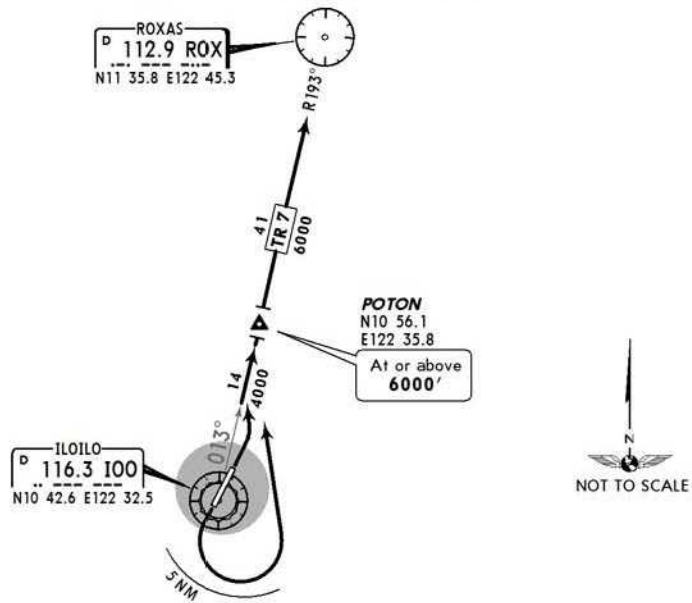
**SID 5A
BACOLOD DEPARTURE**



RWY	INITIAL CLIMB
02	Turn RIGHT within 5 NM.
20	Turn LEFT within 5 NM.

ROUTING
Intercept and track out on IOO R-101 to assigned level.

**SID 7
ROXAS DEPARTURE**



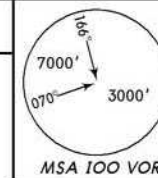
RWY	INITIAL CLIMB
02	Straight-out departure.
20	180° turn to the LEFT within 5 NM.

ROUTING
Intercept and track out on IOO R-013 to ROX via POTON.

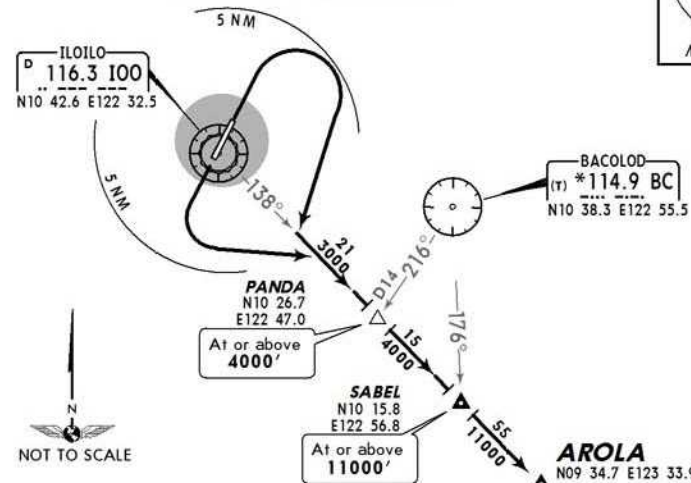
CHANGES: BACOLOC departure revised, new format.

FOR FLIGHTSIM USE ONLY

Apt Elev 18' Trans level: FL130 Trans alt: 11000'



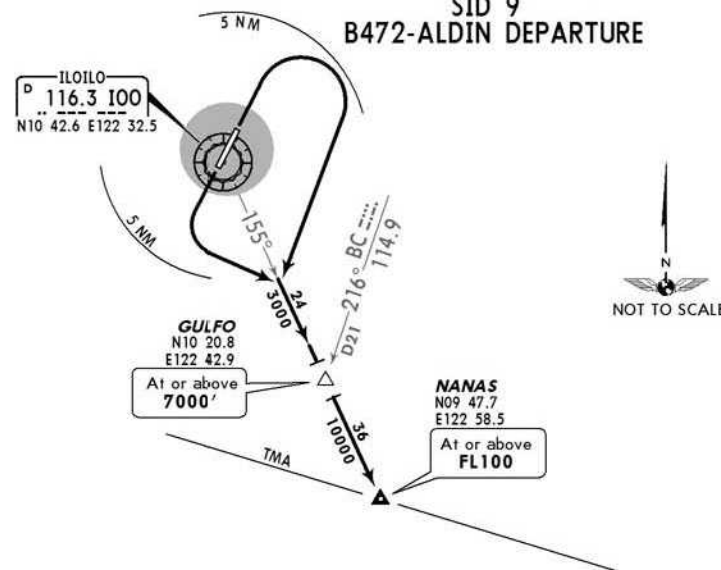
**SID 8
W7-AROLA DEPARTURE**



RWY	INITIAL CLIMB
02	180° turn to the RIGHT within 5 NM.
20	Turn LEFT within 5 NM.

ROUTING
Intercept and track out on IOO R-138 to SABEL via PANDA. Continue climb to AROLA.

**SID 9
B472-ALDIN DEPARTURE**



RWY	INITIAL CLIMB
02	180° turn to the RIGHT within 5 NM.
20	Turn LEFT within 5 NM.

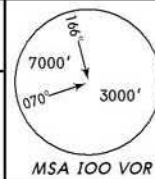
ROUTING
Intercept and track out on IOO R-155 to NANAS via GULFO.

CHANGES: Procedures revised, new format.

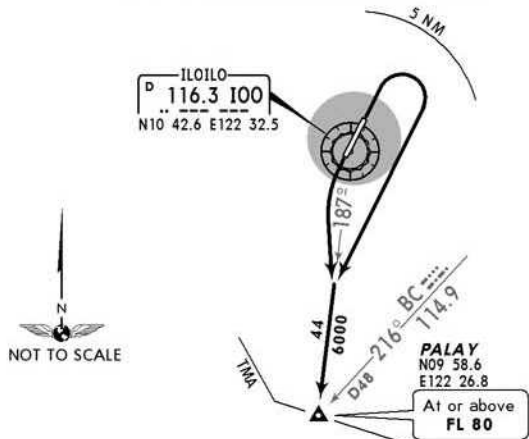
FOR FLIGHTSIM USE ONLY

Apt Elev
18'

Trans level: FL130 Trans alt: 11000'



**SID 10
W3-ZAMBOANGA DEPARTURE**

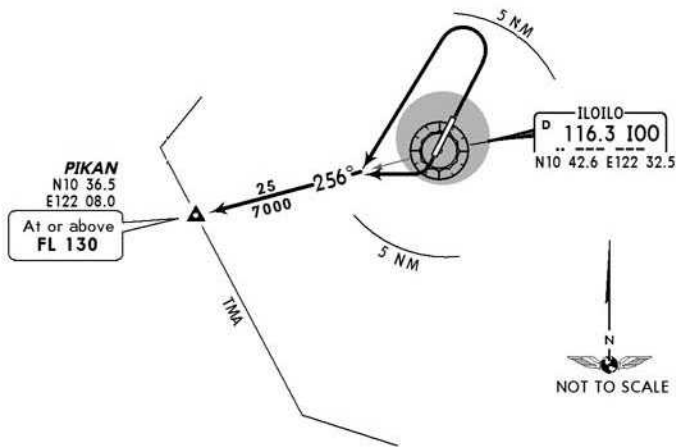


RWY	INITIAL CLIMB
02	180° turn to the RIGHT within 5 NM.
20	Turn LEFT within 5 NM.

ROUTING

Intercept and track out on IOO R-187 to PALAY.

**SID 10A
W17-OCORO DEPARTURE**



RWY	INITIAL CLIMB
02	180° turn to the LEFT within 5 NM.
20	RIGHT turn within 5 NM.

ROUTING

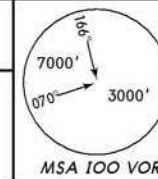
Intercept and track out on IOO R-256 to PIKAN.

CHANGES: SID 10 revised, new format.

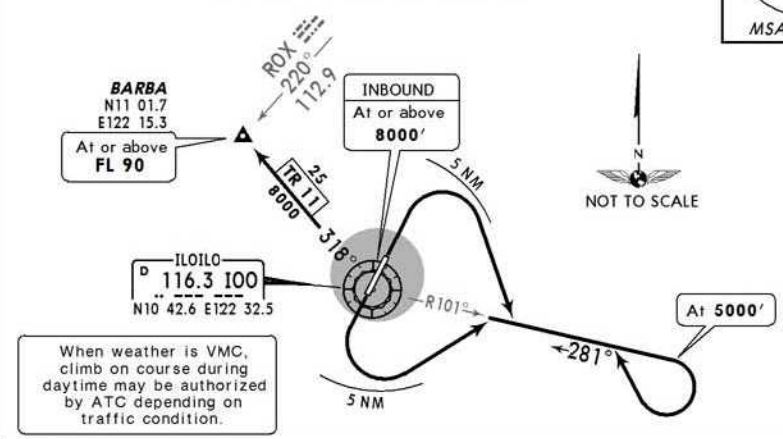
FOR FLIGHTSIM USE ONLY

Apt Elev
18'

Trans level: FL130 Trans alt: 11000'



**SID 11
W3-SAN JOSE DEPARTURE**

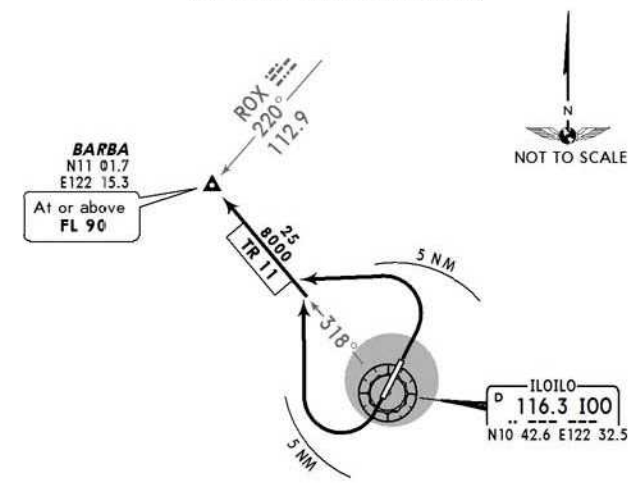


RWY	INITIAL CLIMB
02	Turn RIGHT within 5 NM.
20	Turn LEFT within 5 NM.

ROUTING

Intercept and track out on IOO R-101 to 5000'. Reverse course and track in on IOO R-101 to IOO. Track out on IOO R-318 to BARBA.

**SID 11A
W3-SAN JOSE DEPARTURE
(HIGH PERFORMANCE AIRCRAFT)**



RWY	INITIAL CLIMB
02	Turn LEFT within 5 NM.
20	Turn RIGHT within 5 NM.

ROUTING

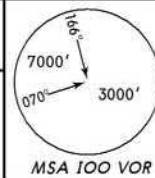
Intercept and track out on IOO R-318 to BARBA.

CHANGES: Procedures revised, new format.

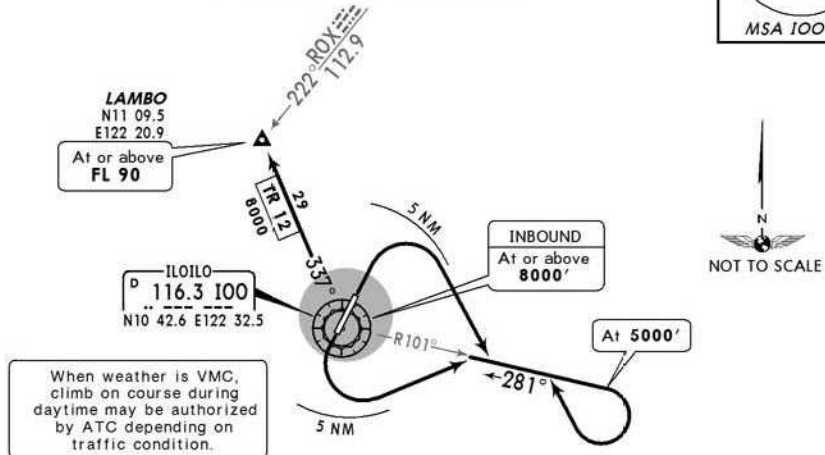
FOR FLIGHTSIM USE ONLY

Apt Elev
18'

Trans level: FL130 Trans alt: 11000'



**SID 12
B472-TAPER DEPARTURE**

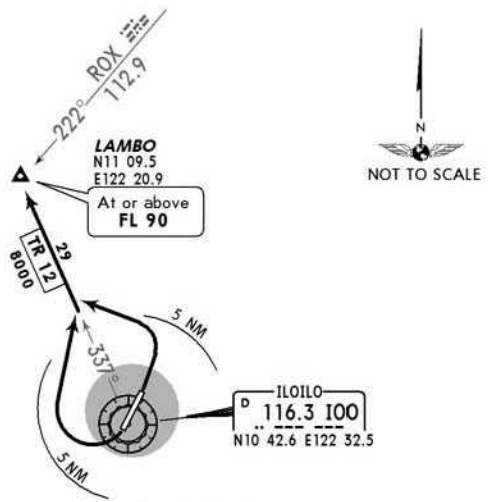


When weather is VMC, climb on course during daytime may be authorized by ATC depending on traffic condition.

RWY	INITIAL CLIMB
02	Turn RIGHT within 5 NM.
20	Turn LEFT within 5 NM.

ROUTING	
Intercept and track out on IOO R-101 to	5000'. Reverse course and track in on IOO R-101 to IOO. Track out on IOO R-337 to LAMBO.

**SID 12A
B472-TAPER DEPARTURE
(HIGH PERFORMANCE AIRCRAFT)**

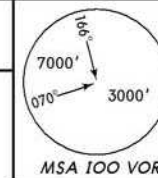


RWY	INITIAL CLIMB
02	Turn LEFT within 5 NM.
20	Turn RIGHT within 5 NM.

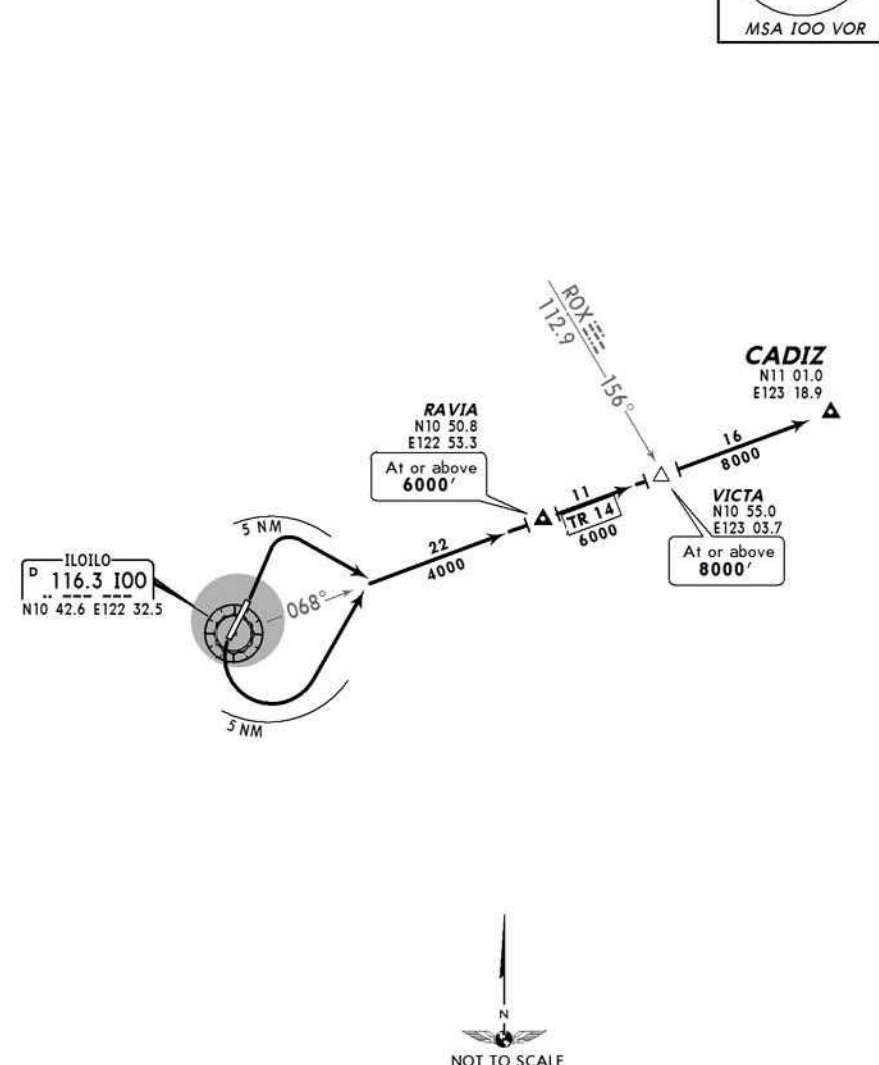
ROUTING	
Intercept and track out on IOO R-337 to LAMBO.	

Apt Elev
18'

Trans level: FL130 Trans alt: 11000'



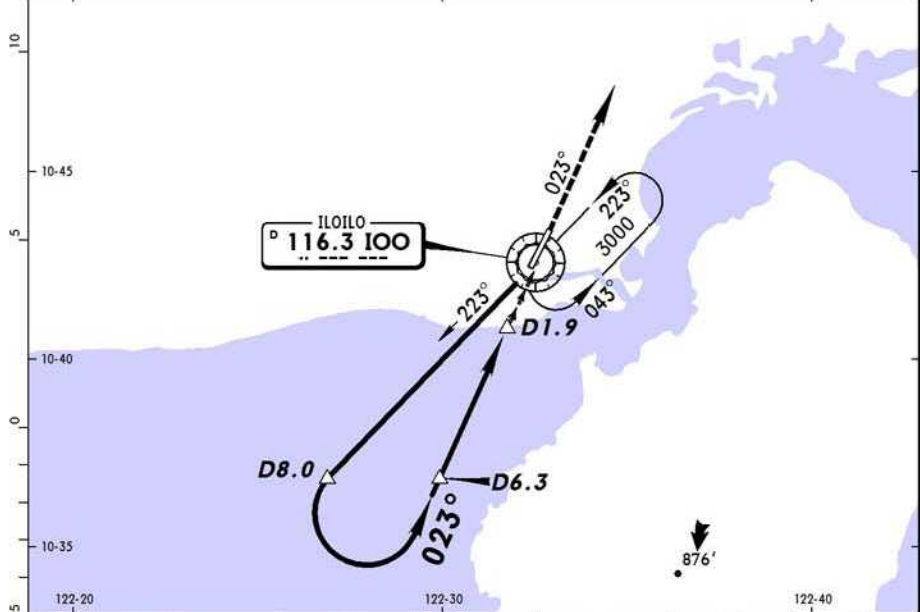
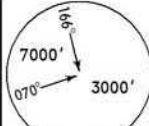
**SID 14
CADIZ DEPARTURE**



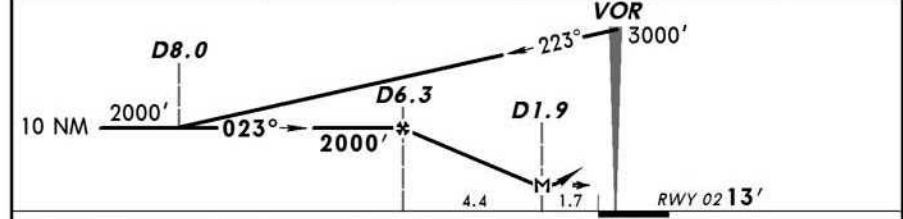
RWY	INITIAL CLIMB
02	Turn RIGHT within 5 NM.
20	180° turn to the LEFT within 5 NM.

ROUTING	
Intercept and track out on IOO R-068 to RAVIA. Continue climb to CADIZ via VICTA.	

*BACOLOD Approach			*ILOILO Tower		
121.0			123.4		
VOR IOO 116.3	Final Apch Crs 023°	Minimum Alt D6.3 2000' (1987')	MDA(H) 590' (577')	Apt Elev 18'	RWY 02 13'
MISSED APCH: At IOO VOR climb outbound on IOO VOR R-023 to 3000'. Return to IOO VOR as instructed by ATC.					
Alt Set: hPa	Rwy Elev: 0 hPa	Trans level: FL 130	Trans alt: 11000'	MSA IOO VOR	

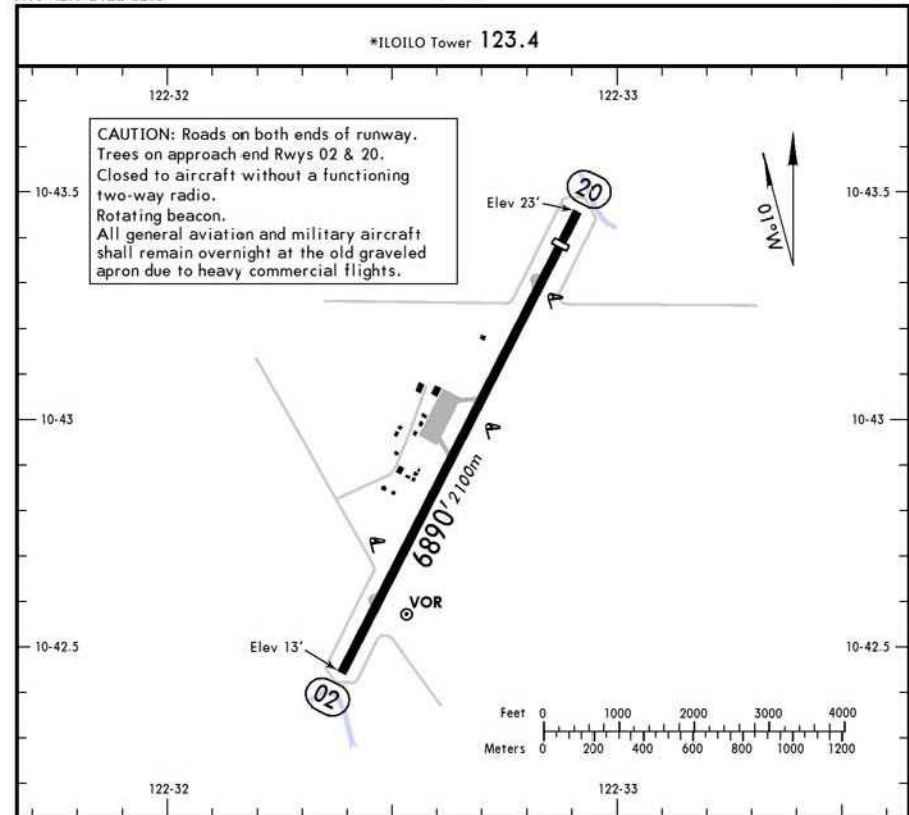


IOO DME	6.3	5.0	4.0	3.0	1.9
ALTITUDE	2000'	1570'	1240'	920'	590'



Gnd speed-Kts	70	90	100	120	140	160
Descent Gradient 5.2%	369	474	527	632	737	843
MAP at D1.9						

STRAIGHT-IN LANDING RWY 02			CIRCLE-TO-LAND		
MDA(H) 590' (577')			ALS out		
A	1.6 km		Max Kts	MDA(H)	
B	2.4 km		100	600' (582') - 1.9 km	
C	NOT APPLICABLE		135	620' (602') - 2.8 km	
D	NOT APPLICABLE		180	720' (702') - 3.7 km	
	NOT APPLICABLE		D	NOT APPLICABLE	

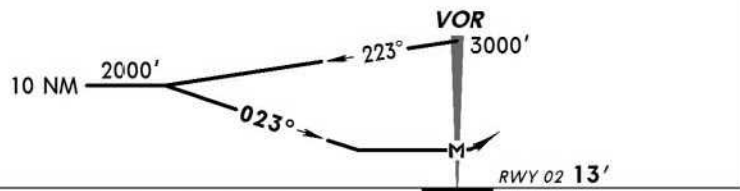
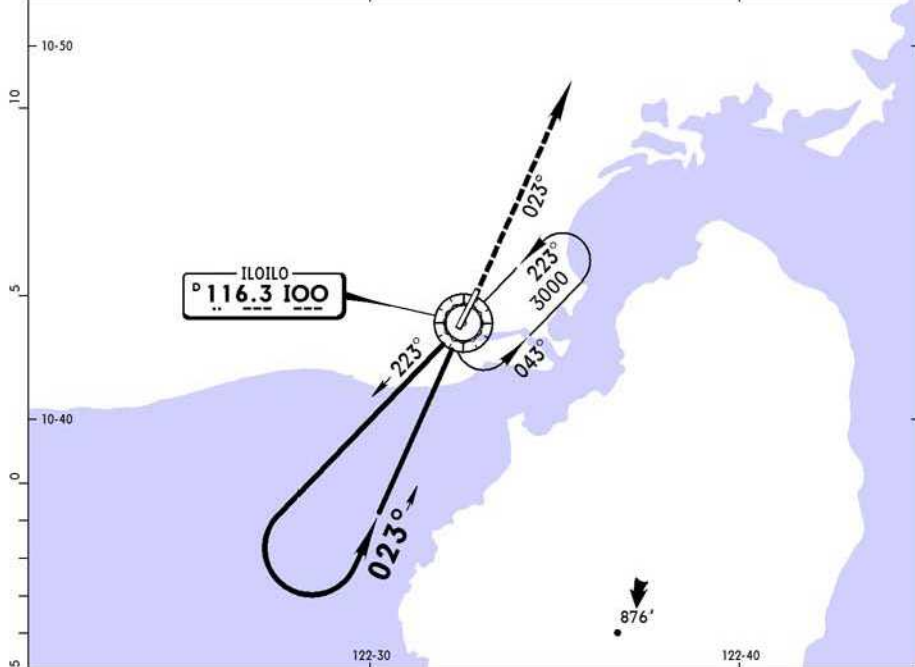
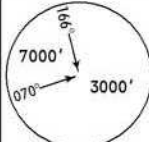


ADDITIONAL RUNWAY INFORMATION					
RWY	USABLE LENGTHS	LANDING BEYOND		TAKE-OFF	WIDTH
		Threshold	Glide Slope		
02	RL (60m) SALS PAPI-L (angle 2.45°)	6398'	1950m		118'
20	RL (60m) PAPI-L (angle 3.00°)				36m

① Rwy 02 first 279' (85m) is 148' (45m) wide.
Rwy 20 first 436' (133m) is 148' (45m) wide.

TAKE-OFF	
AIR CARRIER (JAA)	
LVP must be in Force All Rwys RCLM (DAY only) or RL	All Rwys RCLM (DAY only) or RL
A	250m
B	300m
C	
D	

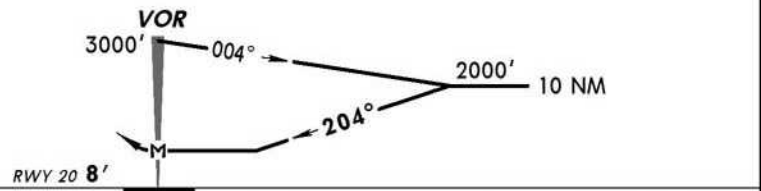
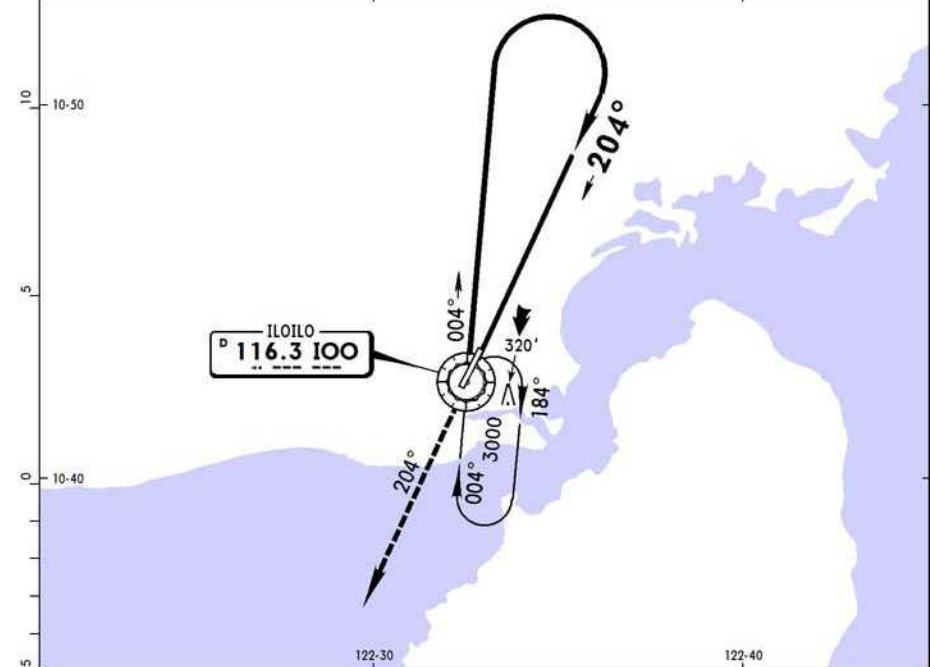
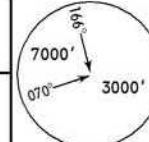
*BACOLOD Approach			*ILOILO Tower		
121.0			123.4		
VOR IOO 116.3	Final Apch Crs 023°	No FAF	MDA(H) 595' (582')	Apt Elev 18'	RWY 02 13'
MISSED APCH: Climb outbound on IOO VOR R-023 to 3000'. Return to IOO VOR as instructed by ATC.					
Alt Set: hPa	Rwy Elev: 0 hPa	Trans level: FL 130	Trans alt: 11000'	MSA IOO VOR	



MAP at VOR		SALS PAPI-L	3000' on 116.3	IOO R-023
------------	--	-------------	----------------	-----------

STRAIGHT-IN LANDING RWY02		CIRCLE-TO-LAND	
MDA(H) 595' (582')		MDA(H)	
ALS out		Max Kts	
A	1.6 km	100	595' (577') -1.9 km
B		135	615' (597') -2.8 km
C	2.4 km	180	715' (697') -3.7 km
D	NOT APPLICABLE	D	NOT APPLICABLE

*BACOLOD Approach			*ILOILO Tower		
121.0			123.4		
VOR IOO 116.3	Final Apch Crs 204°	No FAF	MDA(H) 660' (652')	Apt Elev 18'	RWY 20 8'
MISSED APCH: Climb outbound on IOO VOR R-204 to 3000'. Return to IOO VOR as instructed by ATC.					
Alt Set: hPa	Rwy Elev: 0 hPa	Trans level: FL 130	Trans alt: 11000'	MSA IOO VOR	



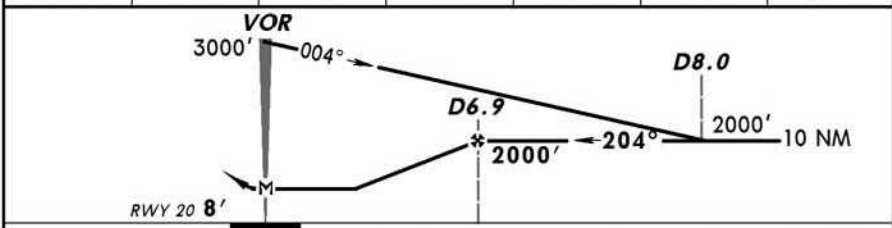
MAP at VOR		SALS PAPI-L	3000' on 116.3	IOO R-204
------------	--	-------------	----------------	-----------

STRAIGHT-IN LANDING RWY20		CIRCLE-TO-LAND	
MDA(H) 660' (652')		MDA(H)	
ALS out		Max Kts	
A	1.6 km	100	660' (642') -1.9 km
B		135	680' (662') -2.8 km
C	2.4 km	180	780' (762') -3.7 km
D	NOT APPLICABLE	D	NOT APPLICABLE

*BACOLOD Approach			*ILOILO Tower		
121.0			123.4		
VOR IOO 116.3	Final Apch Crs 204°	Minimum Alt D6.9 2000' (1992')	MDA(H) 650' (642')	Apt Elev 18'	RWY 20 8'
MISSED APCH: Climb outbound on IOO VOR R-204 to 3000'. Return to IOO VOR as instructed by ATC.					
Alt Set: hPa	Rwy Elev: 0 hPa	Trans level: FL 130	Trans alt: 11000'	MSA IOO VOR	



IOO DME	2.6	3.0	4.0	5.0	6.0	6.9
ALTITUDE	650'	765'	1080'	1400'	1720'	2000'



PAPI-L		3000'	IOO
		↑	on 116.3
MAP at VOR			R-204

STRAIGHT-IN LANDING RWY20		CIRCLE-TO-LAND	
MDA(H) 650' (642')			
A	1.6 km	Max Kts	MDA(H)
B		100	660' (642') - 1.9 km
C	2.4 km	135	680' (662') - 2.8 km
D	NOT APPLICABLE	180	780' (762') - 3.7 km
		D	NOT APPLICABLE

PANS OPS