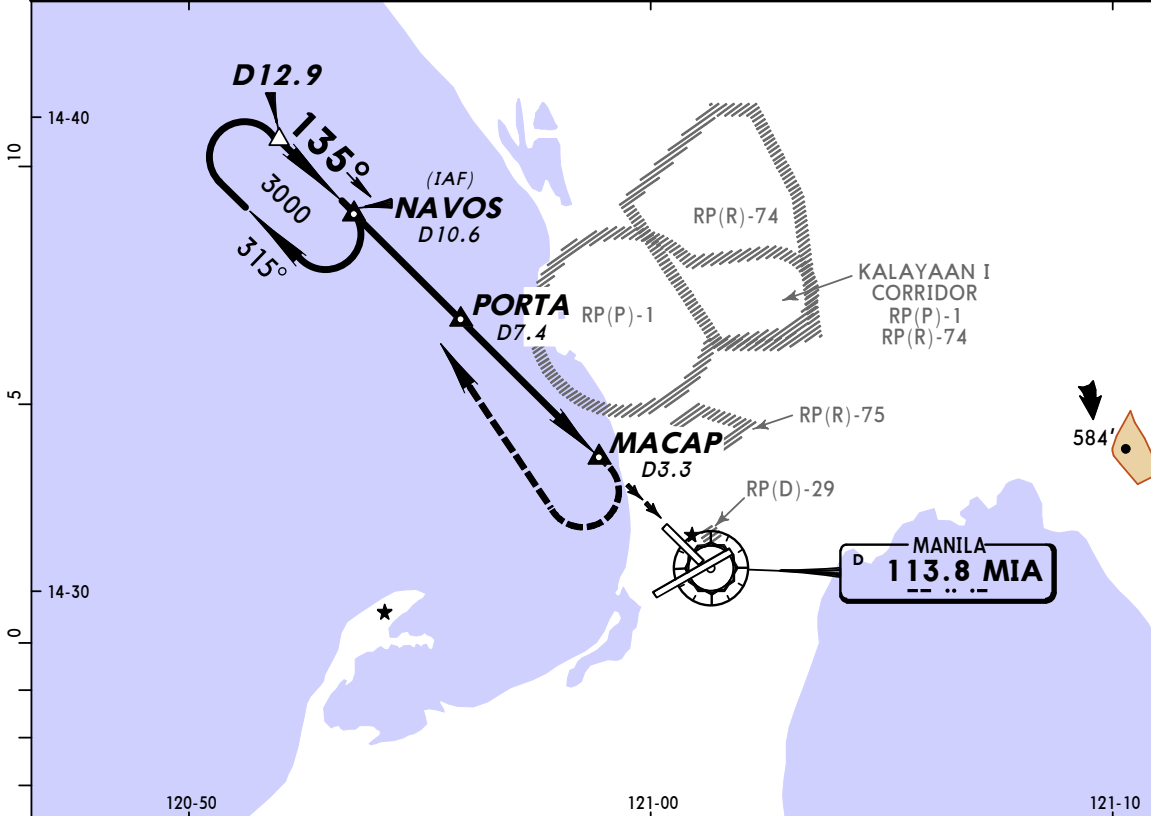
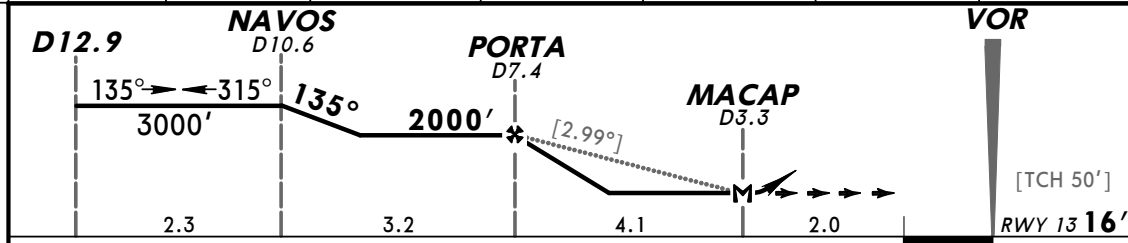


ATIS 126.4		MANILA Approach (R) 119.7		MANILA Tower 118.1		Ground 121.9	
VOR MIA 113.8	Final Apch Crs 135°	Minimum Alt PORTA 2000' (1984')	MDA(H) 700' (684')	Apt Elev 75' RWY 13 16'		<p>MSA MIA VOR</p>	
<p><b>MISSED APCH:</b> Make a climbing RIGHT turn to NAVOS and hold at 3000', or as instructed by ATC.</p> <p>Alt Set: hPa    Rwy Elev: 1 hPa    Trans level: FL 130    Trans alt: 11000'</p> <p>1. For category A &amp; B aircraft with gross weight not to exceed 77,161 lbs (35,000 kg) and during VMC.</p>							



MIA DME	10.6	7.4	6.0	5.0	4.0	3.3
ALTITUDE	3000'	2000'	1560'	1240'	930'	700'



Gnd Speed-Kts	70	90	100	120	140	160	PAPI	3000' RT to NAVOS
Descent Gradient 5.2% or Descent angle [2.99°]	370	476	529	635	741	846		
MAP at D3.3								

STRAIGHT-IN LANDING RWY13				CIRCLE-TO-LAND			
MDA(H) 700' (684')				Max Kts			
A	3.7 km				A	NOT APPLICABLE	
B					B		
C	NOT APPLICABLE				C		
D					D		